



**myrtle  
beach**

**JAMES &  
NICHOLSON**

**PRODUCT GUIDE**

# **WORKWEAR**





## A PERFECT APPEARANCE

### JAMES & NICHOLSON OFFERS THE COMPLETE CORPORATE FASHION PACKAGE.

From head to toe, from the function jacket to matching T-shirts. Thanks to a large color selection and a huge variety of products, any company will easily find a suitable corporate outfit, which can be decorated with their own logo to create a perfect appearance.

Printing or embroidery – your own message is the centre of attention, whereas the branding of JAMES & NICHOLSON remains discreetly in the background. Another example of the decoration competence:

After the breast pockets of the SOLID collection have been embroidered on, they can still be used without restriction as pockets.

See page 12 for more information on corporate fashion.

ITEM	NAME	PAGE	ITEM	NAME	PAGE
JN025	WORKER POLO	146	JN877	WORKWEAR CARGO PANTS - SOLID -	NEW 50
JN135	MEN'S SOFTSHELL JACKET	137	JN878	WORKWEAR PANTS - SOLID -	NEW 18
JN136	MEN'S SOFTSHELL VEST	136	JN879	WORKWEAR PANTS WITH BIB - SOLID -	NEW 20
JN137	LADIES' SOFTSHELL JACKET	137	JN880	WORKWEAR BERMUDAS - SOLID -	NEW 22
JN138	LADIES' SOFTSHELL VEST	136	JN881	WORKWEAR SOFTSHELL LIGHT VEST - SOLID -	NEW 26
JN200	SAFETY VEST	147	JN882	WORKWEAR SOFTSHELL LIGHT JACKET - SOLID -	NEW 24
JN200K	SAFETY VEST JUNIOR	147	JN883	WORKWEAR SOFTSHELL VEST - SOLID -	NEW 30
JN212	WORKER SOCKS COOL	63	JN884	WORKWEAR SOFTSHELL JACKET - SOLID -	NEW 28
JN213	WORKER SOCKS WARM	63	JN885	WORKWEAR SOFTSHELL PADDED VEST - SOLID -	NEW 34
JN641	LADIES' BUSINESS SHIRT LONG-SLEEVED	120	JN886	WORKWEAR SOFTSHELL PADDED JACKET - SOLID -	NEW 32
JN642	MEN'S BUSINESS SHIRT LONG-SLEEVED	120	JN887	WORK OVERALL - SOLID -	NEW 36
JN643	LADIES' BUSINESS SHIRT SHORT-SLEEVED	121	JN888	WORK COAT - SOLID -	NEW 38
JN644	MEN'S BUSINESS SHIRT SHORT-SLEEVED	121	JN889	LADIES' WORKWEAR T-SHIRT - SOLID -	NEW 48
JN800	WORKWEAR-T MEN	145	JN890	MEN'S WORKWEAR T-SHIRT - SOLID -	NEW 48
JN801	WORKWEAR POLO MEN	144	JN891	LADIES' WORKWEAR POLO - SOLID -	NEW 46
JN802	WORKWEAR-T WOMEN	145	JN892	MEN'S WORKWEAR POLO - SOLID -	NEW 46
JN803	WORKWEAR POLO WOMEN	144	JN893	LADIES' WORKWEAR SWEAT-JACKET - SOLID -	NEW 42
JN810	WORKWEAR JACKET	138	JN894	MEN'S WORKWEAR SWEAT-JACKET - SOLID -	NEW 42
JN812	PILOT JACKET 3 IN 1	139	JN895	WORKWEAR HALF-ZIP SWEAT - SOLID -	NEW 44
JN813	WORKWEAR VEST	140	JN897	LADIES' KNITTED WORKWEAR FLEECE JACKET - SOLID -	NEW 40
JN814	WORKWEAR PANTS	140	JN898	MEN'S KNITTED WORKWEAR FLEECE JACKET - SOLID -	NEW 40
JN815	SAFETY VEST ADULTS	147	JN920	MEN'S ROUND-T POCKET	146
JN815K	SAFETY VEST KIDS	147	JN922	MEN'S POLO POCKET	143
JN821	WORKWEAR JACKET - STRONG -	100	JN924	MEN'S ROUND SWEAT POCKET	142
JN822	WORKWEAR VEST - STRONG -	102	JN1000	MEN'S WINTER SOFTSHELL JACKET	132
JN824	CRAFTSMEN SOFTSHELL JACKET - STRONG -	108	JN1001	LADIES' WINTER SOFTSHELL JACKET	132
JN825	CRAFTSMEN SOFTSHELL VEST - STRONG -	109	JN1020	MEN'S SOFTSHELL JACKET	134
JN827	CRAFTSMEN T-SHIRT - STRONG -	116	JN1021	LADIES' SOFTSHELL JACKET	134
JN828	CRAFTSMEN POLOSHIRT - STRONG -	117	JN1022	MEN'S SOFTSHELL VEST	135
JN829	LADIES' WORKWEAR POLO	128	JN1023	LADIES' SOFTSHELL VEST	135
JN830	MEN'S WORKWEAR POLO	128	JN1801	LADIES' BIO STRETCH-T WORK - SOLID -	NEW 59
JN831	WORKWEAR HALF ZIP SWEAT	124	JN1802	MEN'S BIO STRETCH-T WORK - SOLID -	NEW 58
JN832	WORKWEAR PANTS - STRONG -	94	JN1803	LADIES' BIO STRETCH-LONGSLEEVE WORK - SOLID -	NEW 56
JN833	WORKWEAR PANTS WITH BIB - STRONG -	96	JN1804	MEN'S BIO STRETCH-LONGSLEEVE WORK - SOLID -	NEW 56
JN834	WORKWEAR 3/4 PANTS - STRONG -	98	JN1805	LADIES' BIO STRETCH-POLO WORK - SOLID -	NEW 54
JN835	WORKWEAR BERMUDAS - STRONG -	99	JN1806	MEN'S BIO STRETCH-POLO WORK - SOLID -	NEW 54
JN836	WORKWEAR SWEAT JACKET	122	JN1807	LADIES' BIO WORKWEAR T-SHIRT - SOLID -	NEW 60
JN837	LADIES' WORKWEAR T-SHIRT	129	JN1808	MEN'S BIO WORKWEAR T-SHIRT - SOLID -	NEW 60
JN838	MEN'S WORKWEAR T-SHIRT	129	JN1809	LADIES' DOUBLEFACE WORK JACKET - SOLID -	NEW 52
JN840	WORKWEAR SWEAT	125	JN1810	MEN'S DOUBLEFACE WORK JACKET - SOLID -	NEW 53
JN841	LADIES' WORKWEAR FLEECE JACKET - STRONG -	114	MB007	CABRIO CAP	156
JN842	MEN'S WORKWEAR FLEECE JACKET - STRONG -	114	MB022	6 PANEL CHEF CAP	156
JN844	WORKWEAR SOFTSHELL JACKET - STRONG -	104	MB024	6 PANEL SANDWICH CAP	151
JN845	WORKWEAR SOFTSHELL VEST - STRONG -	106	MB036	NEON CAP	154
JN846	MEN'S WORKWEAR POLO POCKET	126	MB041	BANDANA HAT	155
JN847	WORKWEAR PANTS - COLOR -	68	MB074	X-TUBE COTTON	159
JN848	WORKWEAR PANTS WITH BIB - COLOR -	70	MB095	MILITARY CAP	154
JN849	WORKWEAR JACKET - COLOR -	74	MB6111	6 PANEL RAVER CAP	152
JN850	WORKWEAR VEST - COLOR -	76	MB6192	SECURITY CAP	153
JN851	WORKWEAR SOFTSHELL JACKET - COLOR -	78	MB6225	SAFETY CAP	153
JN852	WORKWEAR SOFTSHELL VEST - COLOR -	80	MB6234	6 PANEL WORKWEAR CAP - SOLID -	NEW 149
JN853	WORKWEAR SOFTSHELL PADDED JACKET - COLOR -	82	MB6235	6 PANEL WORKWEAR CAP - COLOR -	NEW 149
JN854	WORKWEAR SOFTSHELL PADDED VEST - COLOR -	84	MB6503	ECONOMIC X-TUBE POLYESTER	159
JN855	LADIES' WORKWEAR FLEECE VEST - STRONG -	115	MB6555	MILITARY SANDWICH CAP	155
JN856	MEN'S WORKWEAR FLEECE VEST - STRONG -	115	MB6556	POWERCAP™ 3-WAY LIGHTING	154
JN857	LADIES' WORKWEAR POLO - COLOR -	88	MB6574	6 PANEL CRAFTSMEN CAP - STRONG -	150
JN858	MEN'S WORKWEAR POLO - COLOR -	88	MB6621	6 PANEL WORKWEAR CAP - STRONG -	150
JN859	LADIES' WORKWEAR T-SHIRT - COLOR -	89	MB7121	KNITTED FLEECE WORKWEAR BEANIE - STRONG -	157
JN860	MEN'S WORKWEAR T-SHIRT - COLOR -	89	MB7141	REFLECTIVE BEANIE	NEW 156
JN861	LADIES' KNITTED WORKWEAR FLEECE JACKET - STRONG -	110	MB7500	KNITTED CAP	157
JN862	MEN'S KNITTED WORKWEAR FLEECE JACKET - STRONG -	110	MB7551	KNITTED CAP THINSULATE™	158
JN864	MEN'S KNITTED WORKWEAR FLEECE HALF-ZIP - STRONG -	112	MB7937	WARM KNITTED CAP	158
JN865	LADIES' WORKWEAR POLO POCKET LONGSLEEVE	127			
JN866	MEN'S WORKWEAR POLO POCKET LONGSLEEVE	127			
JN867	LADIES' WORKWEAR POLO POCKET	126			
JN868	WORKWEAR HALF-ZIP SWEAT - COLOR -	87			
JN869	LADIES' WORKWEAR SWEAT JACKET - COLOR -	86			
JN870	MEN'S WORKWEAR SWEAT JACKET - COLOR -	86			
JN872	WORKWEAR BERMUDAS - COLOR -	72			
JN873	LADIES' BIO WORKWEAR POLO	62			
JN874	MEN'S BIO WORKWEAR POLO	62			



# CONTENT

## SOLID STYLE

The new collection of one-colored styles

14

## COLOR STYLE

The collection with color accents

64

## STRONG STYLE

The durable, functional collection

90

## COTTON & POLY

Washable at 60°C and easy-care

118

## MIXED UP

Allrounders for craftsmen

130

## ACCESSORIES

Carefully chosen protection for head and neck

148

## BRAND- STATEMENT

**BOTH IN TEXTILE PROMOTION AND IN CORPORATE FASHION WEAR JAMES & NICHOLSON AND MYRTLE BEACH ARE MEANWHILE AMONG THE BEST-KNOWN AND MOST POPULAR BRANDS.**

The product diversity of the two product lines is unparalleled and is expanded every year by around 100 fashionable novelties. In the fields of sports, leisure, business and work there is hardly any top or headgear which is not included in the diverse product line.

JAMES & NICHOLSON and myrtle beach are manufactured with social and ecological responsibility. All the textiles are REACH-compliant and manufactured according to STANDARD 100 by OEKO-TEX®. Since 1999 social and environmental aspects have been integrated into the company code of conduct. They are submitted to strict controls.

The selection of the two brands comprises about 900 fashionable products, which are always available in a quantity of approximately 20 million pieces and a stock availability of around 98%. Extremely short delivery periods are a major plus JAMES & NICHOLSON and myrtle beach offer their customers. Service takes top priority – in day-to-day business the focus is always on the customer. That is why the quality of the product lines is the most important thing of the company philosophy – from inception to completion and beyond.

# MADE WITH RESPONSIBILITY

### SOCIAL COMPLIANCE

As members of the 'BSCI/Business Social Compliance Initiative' we commit ourselves to implementing the BSCI code of conduct as part of our business relations with our manufacturers and thus to improving the working conditions within our supply chain and to producing our textiles fairly. This includes our clear commitment to the employees' right to freedom of assembly, protection against discrimination, and an adequate remuneration, that is, at least the statutory national minimum wage. Another central component is the occupational safety regulations. That is how we guarantee that the occupational safety regulations of the ILO (International Labour Organisation) are met. Child labour, forced labour or precarious jobs are not tolerated. Several social compliance departments in the countries of production test all the factories thoroughly and make sure that these conditions are met.

### QUALITY STANDARD

The merchandise is regularly tested by certified testing institutes in the countries of production regarding the given parameter. Moreover, in cooperation with SGS, Testex, Hohenstein and other renowned institutes the quality is continually controlled.

### STANDARD 100 BY OEKO-TEX®

This standard guarantees that textile and non-textile product components pose no threat to health.

### ADHERENCE TO THE REACH-REGULATIONS

We assure you that when manufacturing our myrtle beach products and JAMES & NICHOLSON textiles we meet the obligations of the REACH-regulations.

### OCS STANDARD

When manufacturing garments of myrtle beach and JAMES & NICHOLSON, the Organic Content Standard is a standard for verifying and tracking the exact content of organically grown materials in a final product.

### PROTECTION OF THE ENVIRONMENT

All the products of myrtle beach and JAMES & NICHOLSON are produced in an environmentally friendly way.



Made with 100%  
Organically Grown Cotton  
Certified by CU853836



Made with 95%  
Organically Grown Cotton  
Certified by CU853836



Made with 94%  
Organically Grown Cotton  
Certified by CU853836



Made with 84%  
Organically Grown Cotton  
Certified by CU853836



Made with 50%  
Organically Grown Cotton  
Certified by CU853836

# STYLECHECK WORKWEAR-JACKETS

WHICH JACKET, WHICH LOOK MEETS YOUR REQUIREMENTS? JUST CHOOSE FROM THREE DIFFERENT STYLES:

## SOLID STYLE



NEW

SOFT SHELL

YKK

SOFT SHELL

SOFT SHELL

SIZE XS-6XL



carbon

JN884 WORKWEAR SOFTSHELL JACKET - SOLID -



### Recommended for:

- Garages
- Facility management
- Automotive enterprises
- Warehouse logistics
- Electricians
- Labs
- Engineering
- Testing

### Special Features:

- Triple-stitched seams
- Fashionable reflective details
- YKK-zips
- Concealed buttons and zips

### Material:

Outer fabric (320 g/m<sup>2</sup>):  
100% polyester

## COLOR STYLE



SOFT SHELL

SOFT SHELL

SOFT SHELL

SIZE XS-6XL



black/lime-green

JN851 WORKWEAR SOFTSHELL JACKET - COLOR -

### Recommended for:

- Restaurateurs
- Carpenters
- Assembly works in the high-end section
- Gardeners
- Foresters
- Industrial cleaning

### Special Features:

- Triple-stitched seams
- Fashionable details/contrasting colors – ideal for corporate fashion
- Concealed button placket and zips

### Material:

Outer fabric (320 g/m<sup>2</sup>):  
100% polyester

## STRONG STYLE



CORDURA

SOFT SHELL

SOFT SHELL

SOFT SHELL

SIZE XS-6XL



red/black

JN844 WORKWEAR SOFTSHELL JACKET -STRONG -

### Recommended for:

- Construction industry
- Masons
- Stuccoers
- Plasterers
- Painters
- Road construction
- Underground construction
- Steel construction
- Floor layers
- Tilers
- Plumbers

### Special Features:

- Triple-stitched seams
- CORDURA®insets

### Material:

Outer fabric (320 g/m<sup>2</sup>): 100% polyester



# STYLECHECK WORKWEAR- PANTS

THE IDEAL CHOICE FOR THE DAILY WORK IN PLENTY OF SITUATIONS: JUST CHOOSE FROM THREE DIFFERENT STYLES.

## SOLID STYLE



**JN878 WORKWEAR PANTS - SOLID -**

**Recommended for:**

- Garages
- Facility management
- Automotive enterprises
- Warehouse logistics
- Electricians
- Labs
- Engineering
- Testing

**Special Features:**

- Triple-stitched seams
- Fashionable reflective details
- YKK-zips
- Concealed buttons and zips
- CORDURA®-insets

**Material:**

Outer fabric (260 g/m²): 65% polyester, 35% cotton  
Trimming: 100% polyamide

## COLOR STYLE



**JN847 WORKWEAR PANTS - COLOR -**

**Recommended for:**

- Restaurateurs
- Carpenters
- Assembly works in the high-end section
- Gardeners
- Foresters
- Industrial cleaning

**Special Features:**

- Triple-stitched seams
- Fashionable details/contrasting colors – ideal for corporate fashion
- Concealed button placket and zips
- Washable at 60°C and suitable for tumble-drying

**Material:**

Outer fabric (250 g/m²): 97% cotton, 3% elastane

## STRONG STYLE



**JN832 WORKWEAR PANTS - STRONG -**

**Recommended for:**

- Construction industry
- Masons
- Stuccoers
- Plasterers
- Painters
- Road construction
- Underground construction
- Steel construction
- Floor layers
- Tilers
- Plumbers

**Special Features:**

- Triple-stitched seams
- CORDURA®-insets
- Washable at 60°C and suitable for tumble-drying

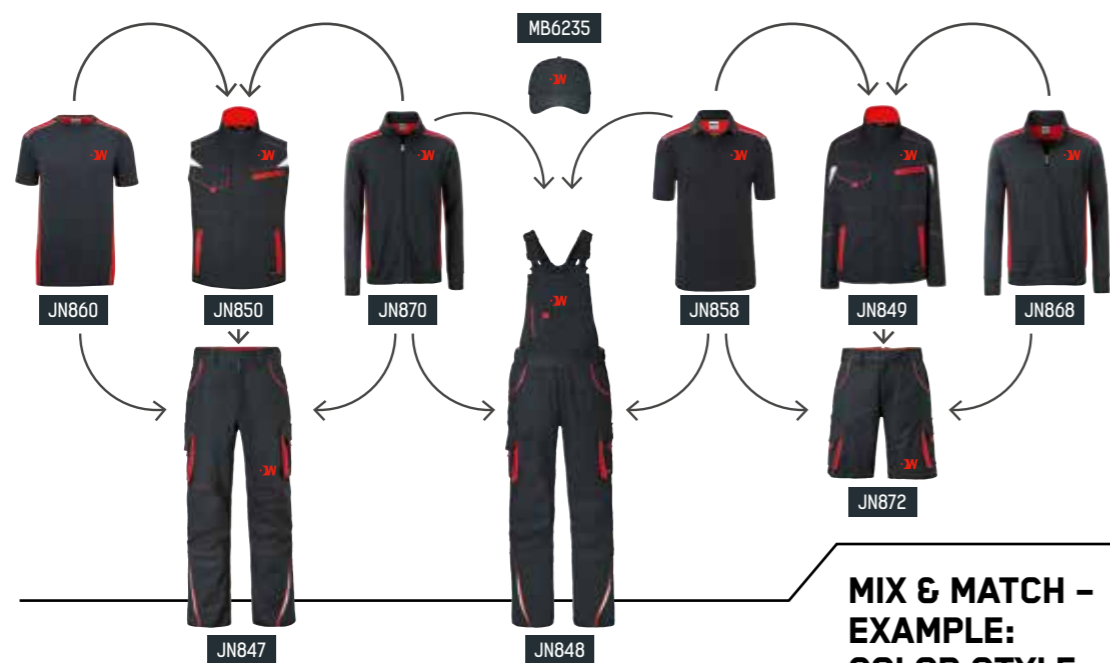
**Material:**

Outer fabric (260 g/m²): 65% polyester, 35% cotton  
Trimming: 100% polyamide



## ONE TEAM. ONE OUTFIT.

There is no second chance for a first impression. Therefore, professional staff outfits are so important. Corporate fashion also boosts team spirit. Respectable, modern, reliable – corporate fashion is the textile figurehead of a company. This helps the employee to identify with the company and his colleagues.



**MIX & MATCH -  
EXAMPLE:  
COLOR STYLE  
IN CARBON-RED**







# SOLID STYLE

## THE NEW GENERATION

Today craftsmen attach importance to a cool style, a perfect fit and suitability for daily use. If the workwear can be easily worn for leisure activities, it is perfect. Therefore, our latest product line looks simple, but it does a damn good job. SOLID STYLE combines functional materials and trendy, reflective elements with carefully chosen details such as triple-stitched seams, Cordura-reinforcements and concealed zips. One-colored, cool, modern.

NEW

SOFT  
SHELL



YKK

60°

CORDURA



JN882 WORKWEAR  
SOFTSHELL LIGHT  
JACKET - SOLID -



JN881 WORKWEAR  
SOFTSHELL LIGHT  
VEST - SOLID -



JN1809 LADIES'  
DOUBLEFACE  
WORK JACKET - SOLID -



JN1810 MEN'S  
DOUBLEFACE  
WORK JACKET - SOLID -



JN889 LADIES'  
WORKWEAR T-SHIRT  
- SOLID -



JN890 MEN'S  
WORKWEAR T-SHIRT  
- SOLID -



JN891 LADIES'  
WORKWEAR POLO  
- SOLID -



JN892 MEN'S  
WORKWEAR POLO  
- SOLID -



JN884 WORKWEAR  
SOFTSHELL JACKET  
- SOLID -



JN883 WORKWEAR  
SOFTSHELL VEST  
- SOLID -



JN897 LADIES'  
KNITTED WORKWEAR  
FLEECE JACKET - SOLID -



JN898 MEN'S  
KNITTED WORKWEAR  
FLEECE JACKET - SOLID -



JN1801 LADIES'  
BIO STRETCH-T  
WORK - SOLID -



JN1802 MEN'S  
BIO STRETCH-T  
WORK - SOLID -



JN1805 LADIES'  
BIO STRETCH-POLO  
WORK - SOLID -



JN1806 MEN'S  
BIO STRETCH-POLO  
WORK - SOLID -



JN886 WORKWEAR  
SOFTSHELL PADDED  
JACKET - SOLID -



JN885 WORKWEAR  
SOFTSHELL PADDED  
VEST - SOLID -



JN893 LADIES'  
WORKWEAR SWEAT-  
JACKET - SOLID -



JN894 MEN'S  
WORKWEAR SWEAT-  
JACKET - SOLID -



JN1803 LADIES'  
BIO STRETCH-LONGSLEEVE  
WORK - SOLID -



JN1804 MEN'S  
BIO STRETCH-LONGSLEEVE  
WORK - SOLID -



JN1807 LADIES'  
BIO WORKWEAR  
T-SHIRT - SOLID -



JN1808 MEN'S  
BIO WORKWEAR  
T-SHIRT - SOLID -



JN880 WORKWEAR  
BERMUDAS  
- SOLID -



JN878 WORKWEAR  
PANTS - SOLID -



JN879 WORKWEAR  
PANTS WITH BIB - SOLID -



JN887  
WORK OVERALL - SOLID -



JN888 WORK COAT  
- SOLID -



JN895 WORKWEAR  
HALF-ZIP SWEAT  
- SOLID -



MB6234  
6 PANEL WORKWEAR  
CAP - SOLID -



It has everything at hand, is fit for anything and doesn't break anything: the hard-wearing style JN878 with dozens of pockets and concealed zips.

# JN878 COMFORTABLE IN EVERY RESPECT



Tearproof triple stitched seam

Knee area reinforced with CORDURA®

red



red



dark-royal



navy



carbon



olive



black

**NEW** CORDURA YKK 60° SIZE 42-62

## JN878 WORKWEAR PANTS - SOLID - Functional work pants in 'classic' look with high-quality details

Durable, hard-wearing mixed fabrics / Elastic waistband with belt loops / Knee area reinforced with CORDURA® / Tearproof triple stitched seam / Front pockets, several tool pockets / 2 zipped pockets, mobile phone pocket / Ruler pocket and pen holders reinforced with CORDURA® / Reflective elements (without protective function / no PPE) on pockets, at the front and at the back / Zips: YKK / Washable at 60°C and suitable for tumble drying

### Buttons and adjusters:

In order to avoid the product in hand being damaged, all the buttons and zips are concealed.

### Material:

Outer fabric (260 g/m²): 65% polyester, 35% cotton / Trimming: 100% polyamide

### Sizes:

Short 25 / 26 / 27 / 28  
Standard 42 / 44 / 46 / 48 / 50 / 52 / 54 / 56 / 58 / 60 / 62  
Long 94 / 98 / 102 / 106 / 110



olive

**NEW** CORDURA YKK 60° SIZE 42-62

**JN879 WORKWEAR PANTS WITH BIB - SOLID -**

Functional work pants in 'classic' look with high-quality details

Durable, hard-wearing mixed fabrics / Elastic waistband with belt loops / Knee area reinforced with CORDURA® / Tearproof triple stitched seam / Front pockets, several tool pockets / 3 zipped pockets, mobile phone pocket / Ruler pocket and pen holders reinforced with CORDURA® / Reflective elements (without protective function / no PPE) on pockets, at the front and at the back / Zips: YKK / Washable at 60°C and suitable for tumble drying

**Buttons and adjusters:**  
In order to avoid the product in hand being damaged, all the buttons and zips are concealed.

**Material:**  
Outer fabric (260 g/m²): 65% polyester, 35% cotton / Trimming: 100% polyamide

**Sizes:**  
Short 25 / 26 / 27 / 28  
Standard 42 / 44 / 46 / 48 / 50 / 52 / 54 / 56 / 58 / 60 / 62  
Long 94 / 98 / 102 / 106 / 110



red carbon dark-royal navy olive black

Fashionable reflective elements on pockets, at the front and at the back

Front pockets, several tool pockets

Knee area reinforced with CORDURA®

Tearproof triple stitched seam

**JN879  
PLENTY  
OF ROOM  
TO MOVE**

# JN880 SHORT AND COOL

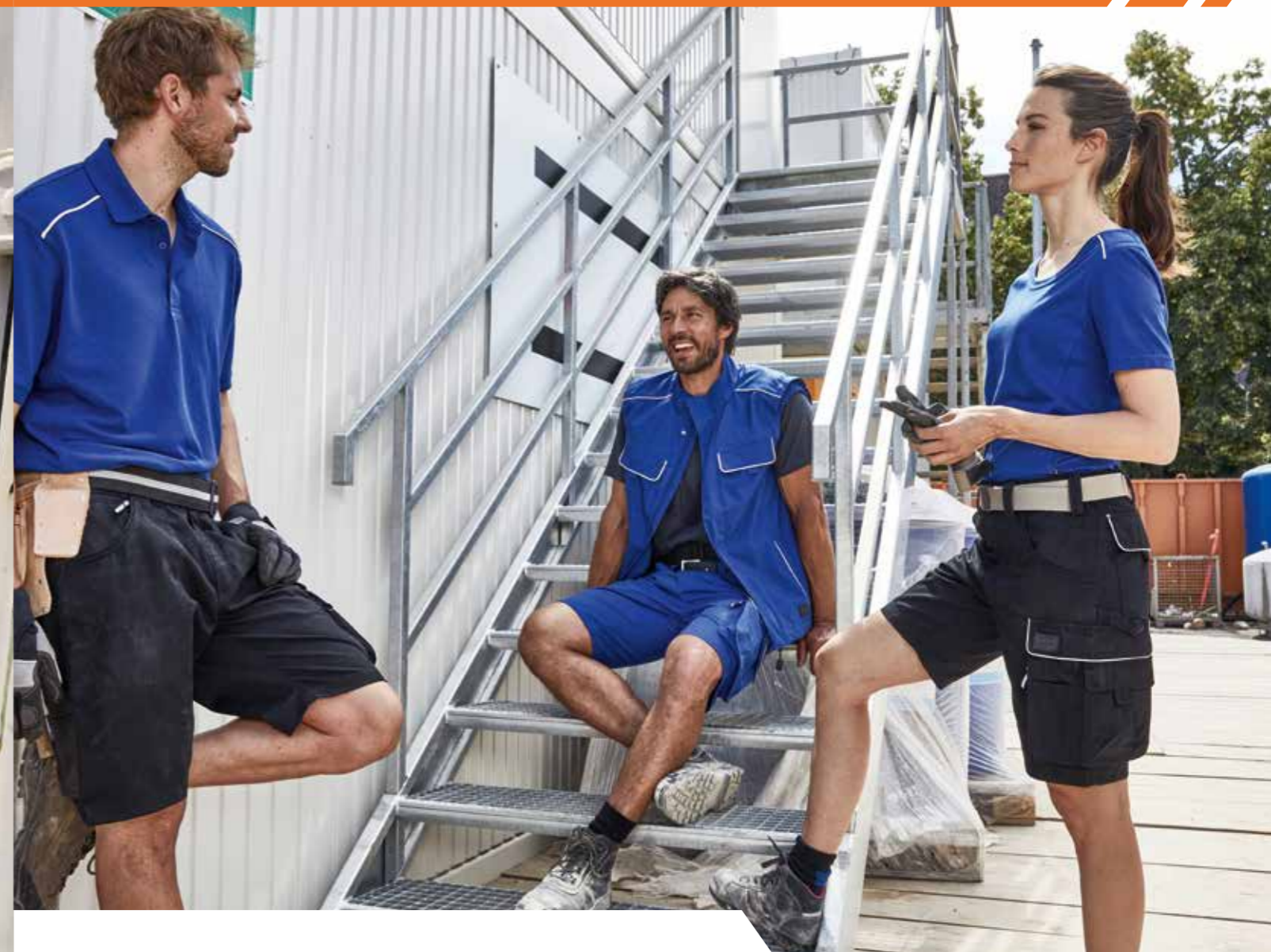
When temperatures climb outside, these bermudas sit back and relax. Casual appearance in casual colors.



Zips: YKK

Fashionable reflective elements on pockets

Ruler pocket and pen holders reinforced with CORDURA®



NEW CORDURA YKK 60° SIZE 42-62

## JN880 WORKWEAR BERMUDAS - SOLID - Functional work shorts in 'classic' look with high-quality details

Durable, hard-wearing mixed fabrics / Elastic waistband with belt loops / Tearproof triple stitched seam / Front pockets, several tool pockets / 2 zipped pockets, mobile phone pocket / Ruler pocket and pen holders reinforced with CORDURA® / Reflective elements (without protective function / no PPE) on pockets / Zips: YKK / Washable at 60°C and suitable for tumble drying

**Buttons and adjusters:**  
In order to avoid the product in hand being damaged, all the buttons and zips are concealed.

**Material:**  
Outer fabric (260 g/m²): 65% polyester, 35% cotton / Trimming: 100% polyamide

**Sizes:**  
42 / 44 / 46 / 48 / 50 / 52 / 54 / 56 / 58 / 60 / 62



black



red

carbon

dark-royal

navy

olive

black

NEW

SOFT SHELL

YKK

SIZE XS-6XL



dark-royal



red

carbon

dark-royal

navy

olive

black

### JN882 WORKWEAR SOFTSHELL LIGHT JACKET - SOLID -

Professional, light softshell jacket in 'classic' look with high-quality details

Durable, light, hard-wearing softshell, inside interlock / Wind- and water-repellent (2,000 mm water column) / Breathable and permeable to water vapour (2,000g/m<sup>2</sup>/24h) / Stand-up collar / Ergonomically shaped sleeves, extended back / Inner sleeve bands / Full-length concealed zip with storm flap and chin cup / Zipped side pockets and inner pocket / Breast pockets with pocket pouch sewn on only on one side to facilitate decoration / Several inner pockets / Reflective elements (without protective function / no PPE) on pockets, shoulder and at the back / Zips: YKK

#### Buttons and zips:

In order to avoid the product in hand being damaged, all the buttons and zips are concealed.

#### Material:

Outer fabric (250 g/m<sup>2</sup>): 100% polyester

#### Sizes:

XS / S / M / L / XL / XXL / 3XL / 4XL / 5XL / 6XL

### SOFTSHELL

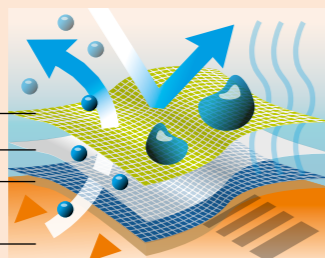
Softshell with TPU membrane consists of three layers. Due to the microporous TPU membrane as middle layer the material is water-proof, wind-proof and breathable at the same time.

Shell

Membrane

Lining

Heatretention



## JN882 IS ON THE BALL

Outside it is cold and wet, inside it is cool and dry. When standing, you will soon be cold, when moving, you will be too warm- this breathable softshell jacket is perfect for the in-between season. It avoids trapped heat, is wind- and weather-proof and on the inside it impresses with its durable and elastic interlock.

NEW SOFT SHELL YKK    SIZE XS-6XL

**JN881 WORKWEAR SOFTSHELL LIGHT VEST - SOLID -**

Professional, light softshell vest in 'classic' look with high-quality details

Durable, light, hard-wearing softshell, inside interlock / Wind- and water-repellent (2,000 mm water column) / Breathable and permeable to water vapour (2,000g/m<sup>2</sup>/24h) / Stand-up collar / Extended back / Elastic band on armhole / Full-length concealed zip with storm flap and chin cup / Zipped side pockets and inner pocket / Breast pockets with pocket pouch sewn on only on one side to facilitate decoration / Several inner pockets / Reflective elements (without protective function / no PPE) on pockets, shoulder and at the back / Zips: YKK

**Buttons and zips:**  
In order to avoid the product in hand being damaged, all the buttons and zips are concealed.

**Material:**  
Outer fabric (250 g/m<sup>2</sup>): 100% polyester

**Sizes:**  
XS / S / M / L / XL / XXL / 3XL / 4XL / 5XL / 6XL



red



red

carbon

dark-royal



navy

olive

black



Elastic band on armhole

Breathable and permeable to water vapour

Fashionable reflective elements

inside interlock





This softshell jacket has an overall cooling effect: On the outside it affords protection against wind and weather. Inside the fleece keeps you warm without overheating.

## JN884 KEEPS YOU WARM AND IS NOT BULKY

NEW

SOFT SHELL

YKK



SIZE XS-6XL



carbon



red

carbon

dark-royal



navy

olive

black



### JN884 WORKWEAR SOFTSHELL JACKET - SOLID -

Professional, light softshell jacket in 'classic' look with high-quality details

Durable, hard-wearing softshell, inside fleece / Wind- and water-repellent (2,000 mm water column) / Breathable and permeable to water vapour (2,000g/m<sup>2</sup>/24h) / Stand-up collar / Ergonomically shaped sleeves, extended back / Inner sleeve cuffs / Full-length concealed zip with storm flap and chin cup / Zipped side pockets and inner pocket / Breast pockets with pocket pouch sewn on only on one side to facilitate decoration / Several inner pockets / Reflective elements (without protective function / no PPE) on pockets, sleeves, shoulders and at the back / Zips: YKK

#### Buttons and zips:

In order to avoid the product in hand being damaged, all the buttons and zips are concealed.

#### Material:

Outer fabric (320 g/m<sup>2</sup>): 100% polyester

#### Sizes:

XS / S / M / L / XL / XXL / 3XL / 4XL / 5XL / 6XL



MB6234 page 149



## JN883 ALLWEATHER VEST

A wind- and water-repellent vest which is extremely comfortable thanks to its elastic sleeve cuffs, extended back and durable interlock.



navy

**NEW** **SOFT SHELL** **YKK** **SIZE XS-6XL**

### JN883 WORKWEAR SOFTSHELL VEST - SOLID - Professional, light softshell vest in 'classic' look with high-quality details

Durable, hard-wearing softshell, inside fleece / Wind- and water-repellent (2,000 mm water column) / Breathable and permeable to water vapour (2,000g/m<sup>2</sup>/24h) / Stand-up collar, extended back / Perfect fit due to elastic band on armholes / Full-length concealed zip with storm flap and chin cup / Zipped side pockets and inner pocket / Breast pockets with pocket pouch sewn on only on one side to facilitate decoration / Several inner pockets / Reflective elements (without protective function / no PPE) on pockets, shoulder and at the back / Zips: YKK

#### Buttons and zips:

In order to avoid the product in hand being damaged, all the buttons and zips are concealed.

#### Material:

Outer fabric (320 g/m<sup>2</sup>): 100% polyester

#### Sizes:

XS / S / M / L / XL / XXL / 3XL / 4XL / 5XL / 6XL



olive

**NEW** SOFT SHELL YKK **SIZE XS-6XL**

**JN886 WORKWEAR SOFTSHELL PADDED JACKET - SOLID -**

Professional softshell jacket with warm inner lining and high-quality details in 'classic' look

Durable, hard-wearing softshell / Wind- and water-repellent (2,000 mm water column) / Breathable and permeable to water vapour (2,000g/m<sup>2</sup>/24h) / Stand-up collar with soft fleece on the inside / Detachable and adjustable hood / Ergonomically shaped sleeves, inner sleeve cuffs, extended back / Full-length concealed zip with storm flap and chin cup / Zipped side pockets and inner pocket / Breast pockets with pocket pouch sewn on only on one side to facilitate decoration / Several inner pockets / Reflective elements (without protective function / no PPE) on pockets, sleeves, shoulders and at the back / Zip for decoration at the back / Zips: YKK

**Buttons and zips:**

In order to avoid the product in hand being damaged, all the buttons and zips are concealed.

**Material:**

Outer fabric: 100% polyester / Lining: 100% polyester / Padding: 100% polyester

**Sizes:**

XS / S / M / L / XL / XXL / 3XL / 4XL / 5XL / 6XL



red carbon dark-royal navy olive black



Stand-up collar with soft fleece on the inside

Full-length concealed zip with storm flap and chin cup

Wind- and water-repellent (2,000 mm water column)

Breathable and permeable to water vapour (2,000g/m<sup>2</sup>/24h)

**JN886 ADVANTAGES AT MINUS TEMPERATURES**

Working well wrapped up even in cold weather is a thing of the past. The warm inner lining in the slim-fit softshell jacket braves adverse weather conditions. The integrated membrane holds off wind and water. Another benefit: a detachable hood. Just wear it.



**JN885 WORKWEAR SOFTSHELL  
PADDED VEST - SOLID -**

**Professional softshell vest with warm inner lining and high-quality details in 'classic' look**

Durable, hard-wearing softshell / Wind- and water-repellent (2,000 mm water column) / Breathable and permeable to water vapour (2,000g/m<sup>2</sup>/24h) / Stand-up collar with soft fleece on the inside / Extended back / Full-length concealed zip with storm flap and chin cup / Zipped side pockets and inner pocket / Breast pockets with pocket pouch sewn on only on one side to facilitate decoration / Several inner pockets / Reflective elements (without protective function / no PPE) on pockets, sleeves, shoulders and at the back / Zip for decoration at the back / Zips: YKK

**Buttons and zips:**  
In order to avoid the product in hand being damaged, all the buttons and zips are concealed.

**Material:**  
Outer fabric: 100% polyester / Lining: 100% polyester / Padding: 100% polyester

**Sizes:**  
XS / S / M / L / XL / XXL / 3XL / 4XL / 5XL / 6XL

**NEW**

**SOFT SHELL**

**YKK**

Reflective elements

Buttons and zips

**SIZE XS-6XL**



navy



red carbon dark-royal navy olive black

Breathable and permeable to water vapour

Breast pockets with pocket pouch sewn on only on one side to facilitate decoration

Several inner pockets





MB7141 page 156



Elastic band and movement pleat at the back

Tearproof triple stitched seam

Reinforced knee area

NEW YKK 60° SIZE 42-60

**JN887 WORK OVERALL - SOLID -**  
Professional work overalls in 'classic' look with high-quality details

Durable, hard-wearing mixed fabrics / Elastic band and movement pleat at the back / Reinforced knee area / Tearproof triple stitched seam / Concealed two-way-zip / 2 front pockets, 2 back pockets with pocket flap, several tool pockets / ruler pocket, zipped pocket, mobile phone pocket / 2 breast pockets with pocket pouch sewn on only on one side to facilitate decoration / Reflective elements (without protective function / no PPE) on pockets, shoulders, at the back and on pants / Zips: YKK / Washable at 60°C and suitable for tumble drying

**Material:**  
Outer fabric (260 g/m<sup>2</sup>): 65% polyester, 35% cotton  
**Sizes:**  
42 / 44 / 46 / 48 / 50 / 52 / 54 / 56 / 58 / 60



red carbon dark-royal navy black



## JN888 DURABLE

Workbench or lab bench: Those who often work standing up and run the risk of their clothes getting dirty, resort to knee-length overalls. Please note: Our product is washable at 60°C and suitable for tumble drying. If only everything was so easy.

NEW 60°

SIZE XS-6XL



white



### JN888 WORK COAT - SOLID - Professional work coat in 'classic' look

Durable, hard-wearing mixed fabrics / Tearproof triple stitched seams / Concealed button placket / 2 side pockets, breast pocket with pencil holder / Washable at 60°C and suitable for tumble drying

**Buttons:**

In order to avoid the product in hand being damaged, all buttons are concealed.

**Material:**

Outer fabric (260 g/m<sup>2</sup>): 65% polyester, 35% cotton

**Sizes:**

XS / S / M / L / XL / XXL / 3XL / 4XL / 5XL / 6XL



red

carbon

dark-royal

navy

black

white



red-melange/black

Fashionable reflective elements on zip, shoulder and at the back

Outside knitted look, inside roughened, soft and fluffy

**NEW** **YKK** SIZE XS-6XL

**JN897 LADIES' KNITTED WORKWEAR FLEECE JACKET - SOLID -**

**JN898 MEN'S KNITTED WORKWEAR FLEECE JACKET - SOLID -**  
Easy-care knitted fleece jacket

Soft, warm, easy-care fabric in melange look / Outside knitted look, inside roughened, soft and fluffy / 2 side pockets with concealed zip, 2 inner pockets / Stand-up collar / Reflective elements (without protective function /no PPE) on zip, shoulder and at the back / Full-length concealed zip with chin cup / Zips: YKK / JN897: lightly waisted

**Material:**  
Outer fabric (280 g/m<sup>2</sup>): 100% polyester

**Sizes:**  
**JN897** XS / S / M / L / XL / XXL / 3XL / 4XL  
**JN898** XS / S / M / L / XL / XXL / 3XL / 4XL / 5XL / 6XL





**NEW** **YKK** **60°** **SIZE XS-6XL**

**JN893 LADIES' WORKWEAR  
SWEAT-JACKET - SOLID -**

**JN894 MEN'S WORKWEAR  
SWEAT-JACKET - SOLID -**

**Sweat jacket with stand-up collar and contrasting piping**

Hard-wearing, easy-care cotton/polyester mixed fabrics / Combed, ring-spun cotton, inside roughened / Piping at the front and at the back / Ribbed bands with elastane on sleeve cuffs and on waist band / 2 side pockets with concealed zip Zips: YKK / Washable at 60°C and suitable for tumble drying

**Material:**

Outer fabric (290 g/m<sup>2</sup>): 70% cotton, 30% polyester

**Sizes:**

**JN893** XS / S / M / L / XL / XXL / 3XL / 4XL

**JN894** XS / S / M / L / XL / XXL / 3XL / 4XL / 5XL / 6XL



olive



red

carbon

dark-royal



navy

olive

black





Piping at the front and at the back

Washable at 60°C and suitable for tumble drying

Ribbed bands with elastane on sleeve cuffs and on waist band

red

**NEW**

### JN895 WORKWEAR HALF-ZIP SWEAT - SOLID - Sweatshirt with stand-up collar, zip and contrasting piping

Hard-wearing, easy-care cotton/polyester mixed fabric / Combed, ring-spun cotton, inside roughened / Piping at the front and at the back / Ribbed bands with elastane on sleeve cuffs and on waist band / Zip: YKK / Washable at 60°C and suitable for tumble drying

**Material:**

Outer fabric (290 g/m<sup>2</sup>): 70% cotton, 30% polyester

**Sizes:**

XS / S / M / L / XL / XXL / 3XL / 4XL / 5XL / 6XL



red

carbon

dark-royal

navy

olive

black



## JN895 OPEN TO EVERYTHING

At work it is always good to have an allrounder on board: This easily combinable zipped sweatshirt can be worn on its own and in a layered look, in harmonious or in contrasting color. With contrasting pipings and a cuddly, roughened inside it is indispensable for the in-between season.





Made with 50%  
Organically Grown Cotton  
Certified by CU853836



**JN891 LADIES' WORKWEAR  
POLO - SOLID -**

**JN892 MEN'S WORKWEAR  
POLO - SOLID -**

**Hard-wearing and easy-care polo shirt  
with contrasting piping**

Mixed fabrics: combed ring-spun organic cotton and polyester for optimum shape retention and washing resistance / Knitted polo collar and sleeve cuffs / Piping at the front and at the back / Washable at 60°C, suitable for tumble drying / JN891: button placket with 4 buttons, lightly waisted / JN892: button placket with 3 buttons

**Material:**  
Outer fabric (200 g/m<sup>2</sup>): 50% cotton, 50% polyester

**Sizes:**  
JN891 XS / S / M / L / XL / XXL / 3XL / 4XL  
JN892 XS / S / M / L / XL / XXL / 3XL / 4XL / 5XL / 6XL



black



**NEW** OCS STANDARD 60° SIZE XS-6XL

**JN889 LADIES' WORKWEAR  
T-SHIRT - SOLID -**

**JN890 MEN'S WORKWEAR  
T-SHIRT - SOLID -**

**Hard-wearing and easy-care T-shirt with  
contrasting piping**

Mixed fabrics: combed ring-spun organic cotton and polyester for optimum shape retention and washing resistance / Piping at the front and at the back / Neckcuff with elastane, neck tape / Washable at 60°C, suitable for tumble drying / JN889: lightly waisted

**Material:**

Outer fabric (160 g/m<sup>2</sup>): 50% cotton, 50% polyester

**Sizes:**

**JN889** XS / S / M / L / XL / XXL / 3XL / 4XL

**JN890** XS / S / M / L / XL / XXL / 3XL / 4XL / 5XL / 6XL



Made with 50%  
Organically Grown Cotton  
Certified by CU853836



**JN889/JN890  
ORGANIC BASICS**



navy

black

**NEW** BIONIC FINISH<sup>ECO</sup> **YKK** **SIZE 42-62**

**JN877 WORKWEAR CARGO PANTS - SOLID -**  
Cargo pants for work and leisure

Durable, hard-wearing, comfortable mixed fabrics with BIONIC FINISH<sup>ECO</sup> / Waistband with belt loops / Tearproof triple stitched seam / 2 front pockets, 2 back pockets / 2 cargo pocket with ruler pocket, mobile phone pocket, pen holder / Zip: YKK

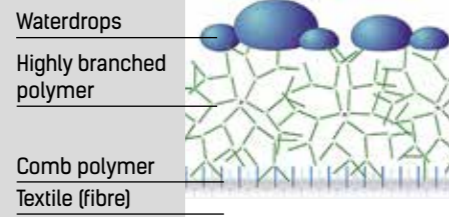
Washable at 60°C, suitable for tumble-drying

**Material:**  
Outer fabric (280 g/m<sup>2</sup>): 64% polyester, 33% cotton, 3% elastane

**Sizes:**  
Short 25 / 26 / 27 / 28  
Standard 42 / 44 / 46 / 48 / 50 / 52 / 54 / 56 / 58 / 60 / 62  
Long 94 / 98 / 102 / 106 / 110

**BIONIC-FINISH<sup>ECO</sup>**

The water-repellent polymers are ramified until the drops are too big to get through them and to penetrate the textile. Environmentally harmful fluorine can be completely dispensed with.



mixed fabrics with BIONIC FINISH<sup>ECO</sup>

2 cargo pocket with ruler pocket, mobile phone pocket, pen holder

Tearproof triple stitched seam

**JN877 STAY CLEAN**

They look good, are comfortable and just shake off the dirt. The highlight of these trendy cargo pants is the fluorine-free impregnation with BIONIC-FINISH<sup>ECO</sup>. This environmentally friendly principle is following the example set by nature – water and dirt particles roll off like waterdrops on duck feathers.



red



**NEW** SIZE XS-6XL

**JN1809 LADIES' DOUBLEFACE WORK JACKET - SOLID -**  
**JN1810 MEN'S DOUBLEFACE WORK JACKET - SOLID -**  
 Functional jacket with stand-up collar and kangaroo pocket

Pleasant two-ply fabric, outside cotton single jersey, inside fleece / Reflective front zip (without protective function / no PPE) / Kangaroo pocket with concealed zips / Elastic waistband and sleeve-cuffs / Zips: YKK / JN1809: lightly waisted

**Material:**  
 Outer fabric (380 g/m<sup>2</sup>): 55% polyester, 45% cotton

**Sizes:**  
**JN1809** XS / S / M / L / XL / XXL / 3XL / 4XL  
**JN1810** XS / S / M / L / XL / XXL / 3XL / 4XL / 5XL / 6XL



**NEW** **OCS** STANDARD **STRETCH** **SIZE XS-6XL**

**JN1805 LADIES' BIO STRETCH-POLO WORK - SOLID -**

**JN1806 MEN'S BIO STRETCH-POLO WORK - SOLID -**

**Polo shirt made of soft elastic piqué**

Combed ring-spun organic cotton / Knitted polo collar and sleeve-bands, side slits / Washable at 40°C, suitable for tumble drying / JN1805: button placket with 4 buttons, lightly waisted / JN1806: button placket with 3 buttons

**Material:**

Outer fabric (210 g/m²): 94% cotton, 6% elastane  
 grey-heather: Outer fabric (210 g/m²):  
 84% cotton, 10% viscose, 6% elastane

**Sizes:**

**JN1805** XS / S / M / L / XL / XXL / 3XL / 4XL  
**JN1806** XS / S / M / L / XL / XXL / 3XL / 4XL /  
 5XL / 6XL



Made with 94%  
 Organically Grown Cotton  
 Certified by CU853836



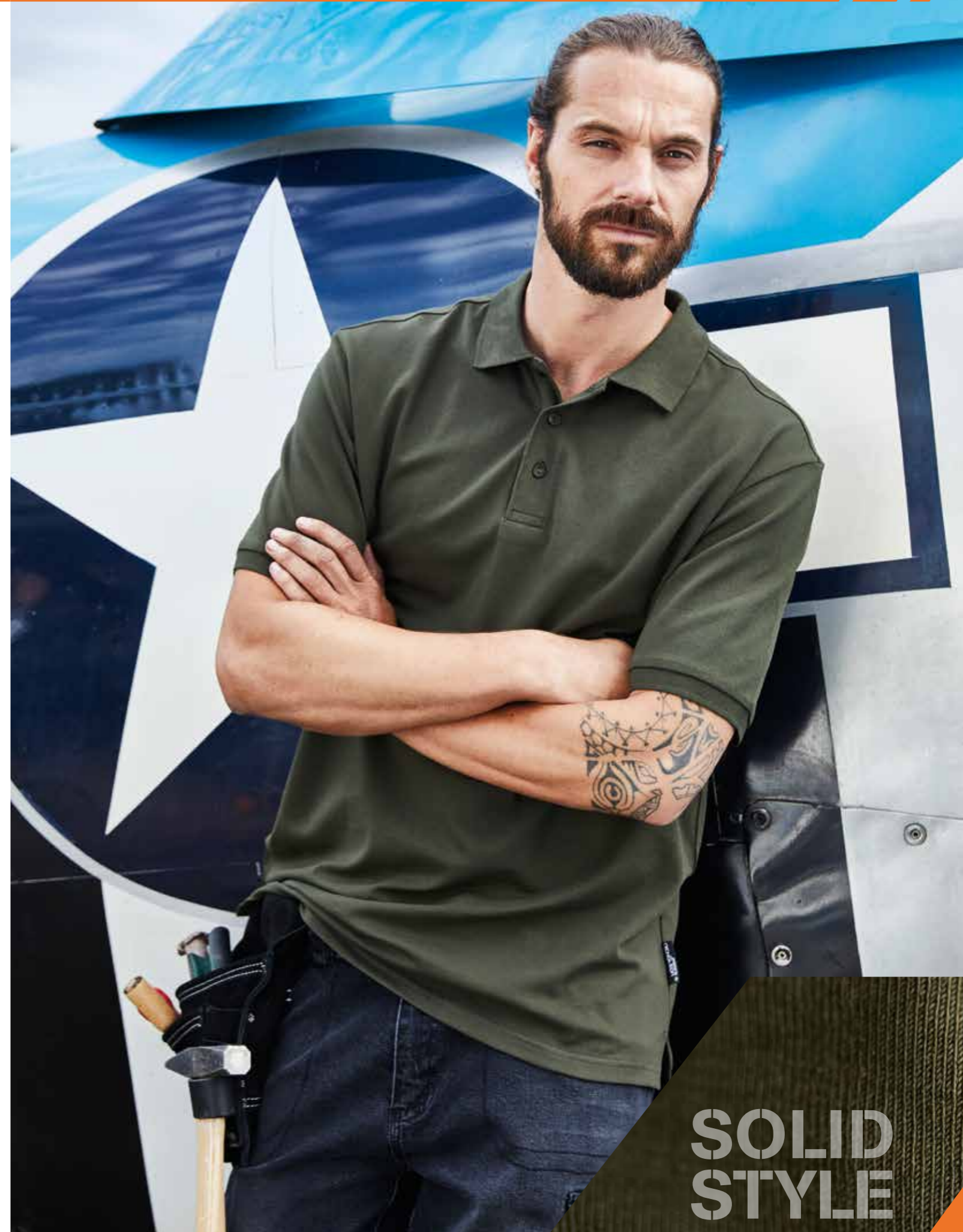
Made with 84%  
 Organically Grown Cotton  
 Certified by CU853836



olive



MB6235 page 149



**SOLID  
 STYLE**



# JN1803/1804 COMFORTABLE LENGTH

Workday, after work, weekend. This fashionable basic T-shirt made of organic cotton and elastane is always comfortable, no matter what color.

**NEW** **OCS** STANDARD **STRETCH** **SIZE XS-6XL**

## JN1803 LADIES' BIO STRETCH-LONGSLEEVE WORK - SOLID - JN1804 MEN'S BIO STRETCH-LONGSLEEVE WORK - SOLID - Ladies' BIO Stretch-Longsleeve Work

Combed ring-spun organic cotton, round neckline / Neck- band with elastane, neck tape / Washable at 40°C, suitable for tumble drying / JN1803: lightly waisted

**Material:**

Outer fabric (180 g/m<sup>2</sup>): 95% cotton, 5% elastane  
grey-heather: Outer fabric (180 g/m<sup>2</sup>): 85% cotton, 10% viscose, 5% elastane

**Sizes:**

**JN1803** XS / S / M / L / XL / XXL / 3XL / 4XL

**JN1804** XS / S / M / L / XL / XXL / 3XL / 4XL / 5XL / 6XL



Made with 95%  
Organically Grown Cotton  
Certified by CU853836



Made with 85%  
Organically Grown Cotton  
Certified by CU853836



turquoise



white

red

turquoise

royal

navy

lime-green

dark-green

olive

grey-heather

carbon

black



JN1801 dark-green

JN1802 dark-green



Made with 95%  
Organically Grown Cotton  
Certified by CU853836



Made with 85%  
Organically Grown Cotton  
Certified by CU853836



**NEW** OCS STANDARD **STRETCH** SIZE XS-6XL

**JN1801 LADIES' BIO STRETCH-T WORK - SOLID -**  
**JN1802 MEN'S BIO STRETCH-T WORK - SOLID -**

T-shirt made of soft elastic single jersey

Combed ring-spun organic cotton, round neckline / Neck band with elastane, neck tape / Washable at 40°C, suitable for tumble drying / JN1801: lightly waisted

**Material:**

Outer fabric (180 g/m<sup>2</sup>): 95% cotton, 5% elastane  
grey-heather: Outer fabric (180 g/m<sup>2</sup>): 85% cotton, 10% viscose, 5% elastane

**Sizes:**

JN1801 XS / S / M / L / XL / XXL / 3XL / 4XL

JN1802 XS / S / M / L / XL / XXL / 3XL / 4XL / 5XL / 6XL



**NEW** OCS STANDARD 60° SIZE XS-6XL

**JN1807 LADIES' BIO WORKWEAR T-SHIRT - SOLID -**  
**JN1808 MEN'S BIO WORKWEAR T-SHIRT - SOLID -**  
**Hard-wearing and easy-care T-shirt**

Mixed fabrics: combed ring-spun organic cotton and polyester for optimum shape retention and washing resistance / Neck band with elastane, neck tape / Washable at 60°C, suitable for tumble drying / JN1807: V-neck, lightly waisted / JN1808: round neckline

**Material:**  
 Outer fabric (160 g/m²): 50% cotton, 50% polyester

**Sizes:**  
**JN1807** XS / S / M / L / XL / XXL / 3XL / 4XL  
**JN1808** XS / S / M / L / XL / XXL / 3XL / 4XL / 5XL / 6XL



Made with 50%  
 Organically Grown Cotton  
 Certified by CU853836



JN1808 brown

JN1807 wine



MB9611 page 152





JN874 lime-green



Made with 50%  
Organically Grown Cotton  
Certified by CU853836



**JN873 LADIES' BIO WORKWEAR POLO**  
**JN874 MEN'S BIO WORKWEAR POLO**  
Easy-care, durable polo shirt

Mixed materials made of combed, ring-spun organic cotton and polyester for optimum shape-retention and washability / Knitted polo collar and sleeve cuffs / Neck tape / JN873: Button placket with 4 buttons, side slits / JN874: Button placket with 3 buttons / Washable at 60°C / Suitable for tumble drying

**Material:**  
Outer fabric (200 g/m<sup>2</sup>): 50% cotton, 50% polyester

**Sizes:**  
JN873 XS / S / M / L / XL / XXL / 3XL / 4XL  
JN874 XS / S / M / L / XL / XXL / 3XL / 4XL / 5XL / 6XL



SIZE  
35-47

**JN212 WORKER SOCKS COOL**

Functional socks for ladies and men

Calf-high / Light and thermo-regulating  
Flat, pressure-free whipped seam / Elastic, wide cuffs

**Material:**  
Outer fabric: 79% polyamide, 11% polyester, 8% Polypropylene, 2% elastane

**Sizes:** 35-38 / 39-41 / 42-44 / 45-47



black/royal



SIZE  
35-47

**JN213 WORKER SOCKS WARM**

Functional socks for ladies and men

Calf-high / Warm and thermo-regulating  
Flat, pressure-free whipped seam / Elastic, wide cuffs

**Material:**  
Outer fabric: 68% polyester, 18% polyamide, 6% wool, 6% Polypropylene, 2% elastane

**Sizes:** 35-38 / 39-41 / 42-44 / 45-47



black/red





# WORKING WITH PROFESSIONALS

What the workwear of JAMES & NICHOLSON distinguishes is a lot of experience: Not only our own experience but also the experience of craftsmen and handymen. Their inspirations are deeply rooted in this product line. Therefore, COLOR STYLE has been convincing for years with a durable and yet elastic quality, tearproof seams and numerous pockets. The zips and buttons are concealed. What is striking however, is the sporty bicolor design.



COLOR  
STYLE



**JN850**  
WORKWEAR VEST  
- COLOR -



**JN849**  
WORKWEAR JACKET  
- COLOR -



**JN859 LADIES'**  
WORKWEAR T-SHIRT  
- COLOR -



**JN860 MEN'S**  
WORKWEAR T-SHIRT  
- COLOR -



**JN857 LADIES'**  
WORKWEAR POLO  
- COLOR -



**JN858 MEN'S**  
WORKWEAR POLO  
- COLOR -



**JN852 WORKWEAR**  
SOFTSHELL VEST  
- COLOR -



**JN851 WORKWEAR**  
SOFTSHELL JACKET  
- COLOR -



**JN848 WORKWEAR**  
PANTS WITH BIB  
- COLOR -



**JN847**  
WORKWEAR PANTS  
- COLOR -



**JN869 LADIES'**  
WORKWEAR  
SWEAT JACKET  
- COLOR -



**JN870 MEN'S**  
WORKWEAR  
SWEAT JACKET  
- COLOR -



**JN854 WORKWEAR**  
SOFTSHELL PADDED VEST  
- COLOR -



**JN853 WORKWEAR**  
SOFTSHELL PADDED  
JACKET - COLOR -



**MB6235**  
6 PANEL CAP - COLOR -



**JN868 WORKWEAR**  
HALF-ZIP SWEAT - COLOR -



**JN872 WORKWEAR**  
BERMUDAS - COLOR -



Ruler, pencils, smartphone, tools – in the ergonomically cut workwear pants all the tools have their place.

# JN847 ENOUGH SPACE FOR EVERYTHING

60° SIZE 42-62

## JN847 WORKWEAR PANTS - COLOR -

Functional pants in casual look with high-quality features

Light, elastic canvas / Perfect, comfortable fit thanks to elastane and an ergonomic cut / Triple stitched seam / Elastic waistband with belt loops / Pockets, several tool pockets, ruler pocket, pen holders and mobile phone pocket / Reflective elements (without protective function/ no PPE) at the front and back / Washable at 60°C, suited for tumble drying

**Buttons and zips:**  
In order to avoid the product in hand being damaged, all the buttons and zips are concealed.

**Material:**  
Outer fabric (250 g/m<sup>2</sup>): 97% cotton, 3% elastane

**Sizes:**  
Short 25 / 26 / 27 / 28  
Standard 42 / 44 / 46 / 48 / 50 / 52 / 54 / 56 / 58 / 60 / 62  
Long Turned-up hem:  
Pants can be lengthened by 4 cm



red/navy royal/white navy/turquoise white/royal



carbon/red brown/stone dark-green/orange black/lime-green

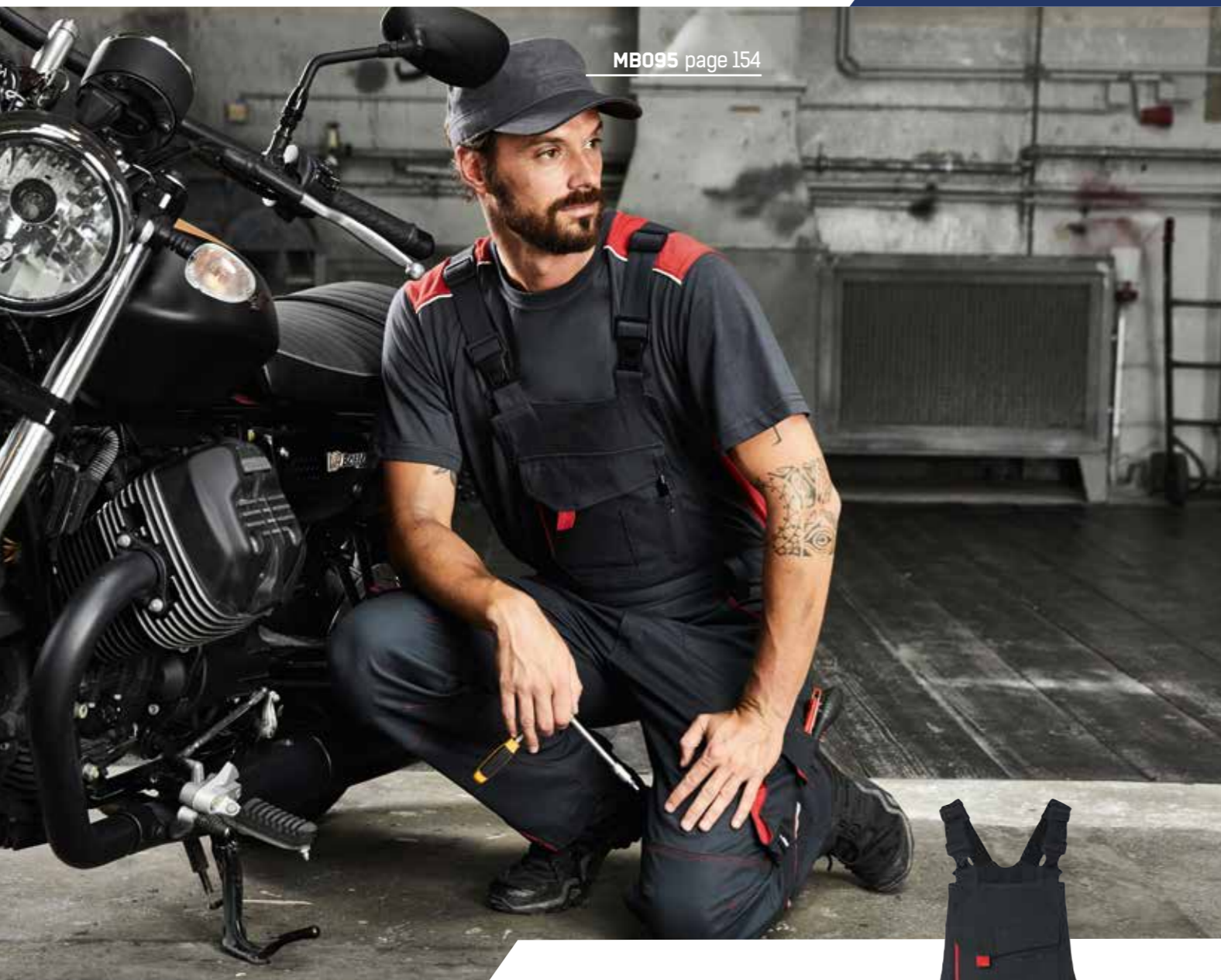


black/lime-green



MB024 page 151

MB095 page 154



Elastische, leichte  
Light, elastic canvas

Elastic waistband  
with belt loops

Pockets, several  
tool pockets,  
ruler pocket



60°  
SIZE  
42-62

**JN848 WORKWEAR PANTS  
WITH BIB-LEVEL - COLOR -**  
Functional overalls in casual look  
with high-quality features

Light, elastic canvas / Perfect, comfortable fit thanks to elastane and an ergonomic cut / Triple stitched seam / Elastic waistband with belt loops / Bib with adjustable, elasticated braces Pockets, several tool pockets, ruler pocket, pen holders and mobile phone pocket / Spacious zipped pocket on the inside of bib / Reflective elements (without protective function/no PPE) at the front and back / Washable at 60°C, suited for tumble drying

**Buttons and zips:**  
In order to avoid the product in hand being damaged, all the buttons and zips are concealed.

**Material:**  
Outer fabric (250 g/m²): 97% cotton, 3% elastane

**Sizes:**  
42 / 44 / 46 / 48 / 50 / 52 / 54 / 56 / 58 / 60 / 62



# JN872 IN SHORT

These bermudas make short shrift of summer heat ! Sporty, easy-care bermudas with a high cotton content.



Washable at 60°C, suited for tumble drying

Tearproof triple stitched seam

Perfect, comfortable fit thanks to elastane and ergonomic cut

red/navy



## JN872 WORKWEAR BERMUDAS - COLOR -

Functional shorts in casual look with high-quality features

Light, elastic canvas / Perfect, comfortable fit thanks to elastane and ergonomic cut / Tearproof triple stitched seam / Elastic waistband with belt loops / Pockets, several tool pockets, ruler pocket, pen holders and mobile phone pocket / Washable at 60°C, suited for tumble drying

### Buttons and zips:

In order to avoid the product in hand being damaged, all the buttons and zips are concealed.

### Material:

Outer fabric (250 g/m²): 97% cotton, 3% elastane

### Sizes:

42 / 44 / 46 / 48 / 50 / 52 / 54 / 56 / 58 / 60 / 62





dark-green/orange



**JN849 WORKWEAR JACKET - COLOR -**  
**Functional jacket in casual look with high-quality features**

Light, elastic canvas / Perfect, comfortable fit thanks to elastane and an ergonomic cut / Stand-up collar on the inside with soft fleece / Ergonomically shaped sleeves / Full-length concealed zip with storm flap and chin cup / Inner sleeve cuffs / Zipped side pockets, breast pocket and inside pocket / Breast pocket with flap and hook and loop fastener, mobile phone pocket inside / Reflective elements (without protective function/no PPE) on sleeves and at the back / Washable at 60°C, suited for tumble drying

**Buttons and zips:**

In order to avoid the product in hand being damaged, all the buttons and zips are concealed.

**Material:**

Outer fabric (250 g/m<sup>2</sup>): 97% cotton, 3% elastane

**Sizes:**

XS / S / M / L / XL / XXL / 3XL / 4XL / 5XL / 6XL



60°  
SIZE XS-6XL

**JN850 WORKWEAR VEST - COLOR -**

**Functional vest in casual look with high-quality features**

Light, elastic canvas / Perfect, comfortable fit thanks to elastane and an ergonomic cut / Stand-up collar on the inside with soft fleece / Full-length concealed zip with storm flap and chin cup / Inner sleeve cuffs / Zipped side pockets, breast pocket and inside pocket / Breast pocket with flap and hook and loop fastener, mobile phone pocket inside / Reflective elements (without protective function/no PPE) at the front and back / Washable at 60°C, suited for tumble drying

**Buttons and zips:**

In order to avoid the product in hand being damaged, all the buttons and zips are concealed.

**Material:**

Outer fabric (250 g/m<sup>2</sup>): 97% cotton, 3% elastane

**Sizes:**

XS / S / M / L / XL / XXL / 3XL / 4XL / 5XL / 6XL



Stand-up collar on the inside with soft fleece

Fashionable reflective elements

Full-length concealed zip with storm flap and chin cup

MB7500 page 157



**JN850 COLOR CHANGE**

The collection COLOR STYLE impresses with a multitude of colors and a complete outfit programme. Short, long, light or warm, all the styles are comfortable.



MB6111 page 152



**JN851 WORKWEAR SOFTSHELL JACKET - COLOR -**

**Functional softshell jacket with high-quality features**

Sturdy, durable softshell / Wind- and water-repellent (2,000 mm water column) / Breathable and permeable to water vapour (2,000 g/m<sup>2</sup>/24 h) / Stand-up collar / Ergonomically shaped sleeves, extended back / Inner sleeve bands / Full-length concealed zip with storm flap and chin cup / Zipped side pockets, breast pocket and inner pocket / Breast pocket with flap, mobile phone pocket inside / Reflective elements (without protective function/no PPE) on sleeves and at the back

**Buttons and zips:**  
In order to avoid the product in hand being damaged, all the buttons and zips are concealed.

**Material:**  
Outer fabric (320 g/m<sup>2</sup>): 100% polyester

**Sizes:**  
XS / S / M / L / XL / XXL / 3XL / 4XL / 5XL / 6XL



red/navy

Ergonomically shaped sleeves, extended back

Sturdy, durable softshell



The softshell fabric adapts to every movement and is not afraid of rain showers. A great look, water column 2.000.

## JN852 FLEXIBLE



brown/stone



### JN852 WORKWEAR SOFTSHELL VEST - COLOR -

Functional softshell vest with high-quality features

Sturdy, durable softshell / Wind- and water-repellent (2,000 mm water column) / Breathable and permeable to water vapour (2,000 g/m<sup>2</sup>/24 h) / Stand-up collar / Extended back / Elastic seam on the armhole for a perfect fit / Full-length concealed zip with storm flap and chin cup / Zipped side pockets, breast pocket and inner pocket / Breast pocket with flap, mobile phone pocket inside / Reflective elements (without protective function/no PPE) at the front and at the back

**Buttons and zips:**

In order to avoid the product in hand being damaged, all the buttons and zips are concealed.

**Material:**

Outer fabric (320 g/m<sup>2</sup>): 100% polyester

**Sizes:**

XS / S / M / L / XL / XXL / 3XL / 4XL / 5XL / 6XL

MB7551 page 158



**JN853 WORKWEAR SOFTSHELL  
PADDED JACKET - COLOR -**

**Functional softshell jacket with warm inner lining**

Sturdy, durable softshell / Wind- and water-repellent (2,000 mm water column) / Breathable and permeable to water vapour (2,000 g/m<sup>2</sup>/24 h) / Stand-up collar on the inside with soft fleece / Ergonomically shaped sleeves, extended back / Warm, elastic inside cuffs / Full-length concealed zip with storm flap and chin cup / Zipped side pockets, breast pocket and inner pocket / Breast pocket with flap, mobile phone pocket inside / Reflective details (without protective function/no PPE) on sleeve and at the back / Zip for decoration at the back

**Buttons and zips:**  
In order to avoid the product in hand being damaged, all the buttons and zips are concealed.

**Material:**  
Outer fabric: 100% polyester / Lining: 100% polyester / Padding: 100% polyester

**Sizes:**  
XS / S / M / L / XL / XXL / 3XL / 4XL / 5XL / 6XL



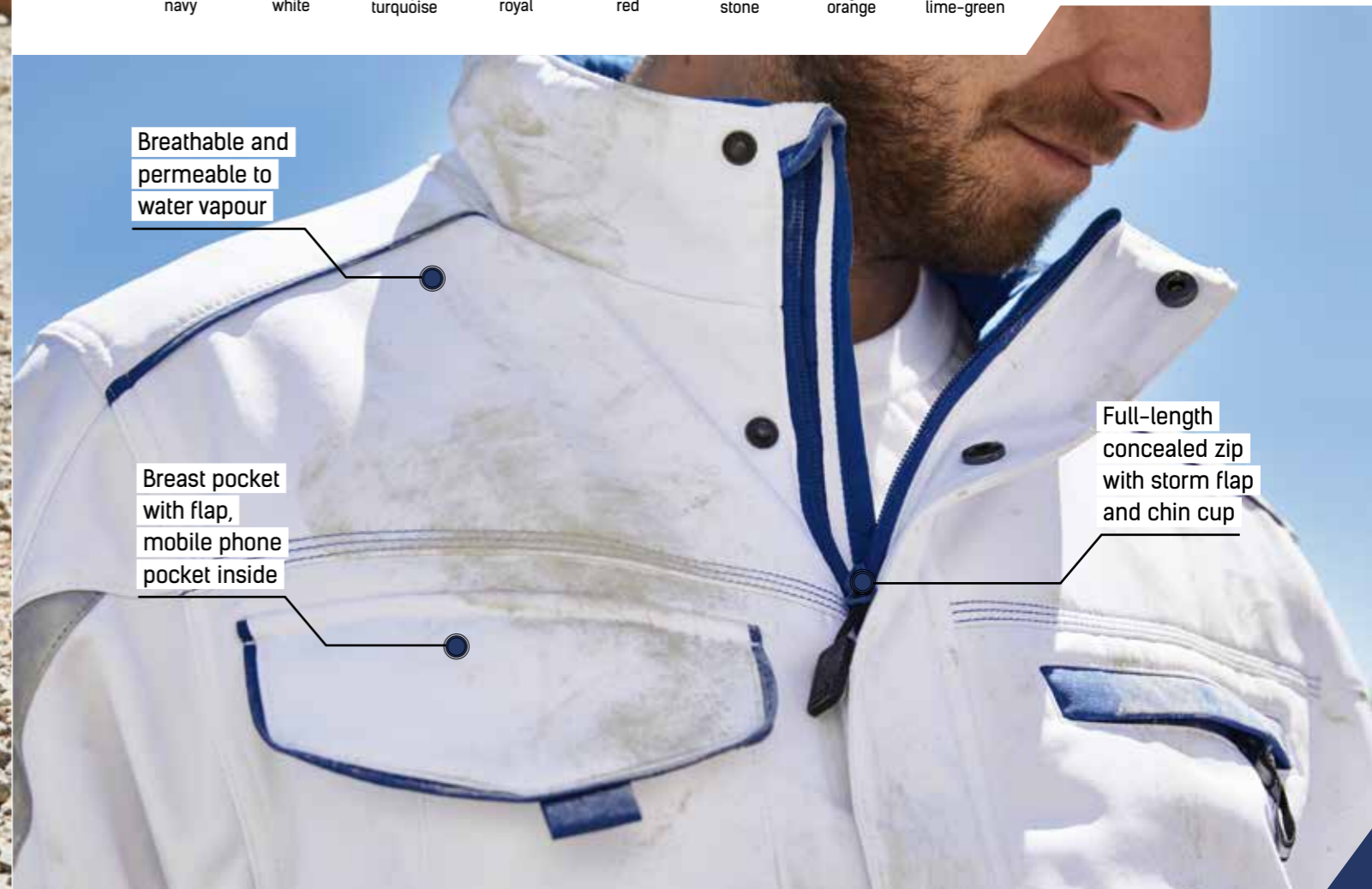
white/royal



Breathable and permeable to water vapour

Breast pocket with flap, mobile phone pocket inside

Full-length concealed zip with storm flap and chin cup





**JN854 WORKWEAR SOFTSHELL  
PADDED VEST - COLOR -**

**Functional softshell vest with warm inner lining**

Sturdy, durable softshell / Wind- and water-repellent (2,000mm water column) / Breathable and permeable to water vapour (2,000 g/m<sup>2</sup>/24 h) / Stand-up collar on the inside with soft fleece / Extended back / Full-length concealed zip with storm flap and chin cup / Zipped side pockets, breast pocket and inner pocket / Breast pocket with flap, mobile phone pocket inside / Reflective details (without protective function/ no PPE) at the front and at the back / Zip for decoration at the back

**Buttons and zips:**

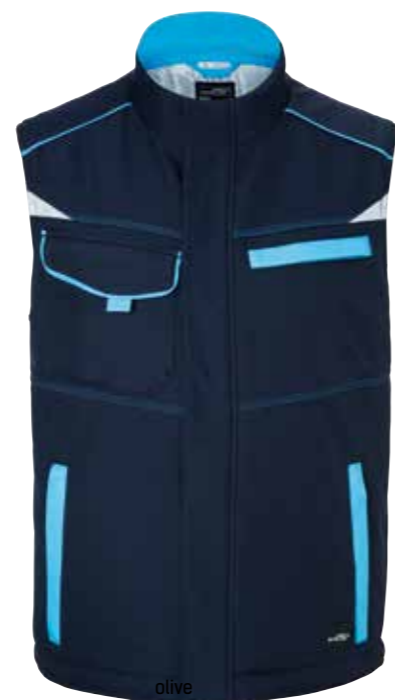
In order to avoid the product in hand being damaged, all the buttons and zips are concealed.

**Material:**

Outer fabric: 100% polyester / Lining: 100% polyester / Padding: 100% polyester

**Sizes:**

XS / S / M / L / XL / XXL / 3XL / 4XL / 5XL / 6XL



olive  
navy/turquoise



MB7937 page 158



**JN854  
KEEPS YOU  
WARM**

A figure-hugging look, keeps out wind and cold, transports moisture from inside to the outside – this padded jacket cuts a fine figure in several ways.



60° SIZE XS-6XL

**JN869 LADIES' WORKWEAR SWEAT JACKET - COLOR -**

**JN870 MEN'S WORKWEAR SWEAT JACKET - COLOR -**

**Sweat jacket with stand-up collar and contrasting insets**

Durable, easy-care cotton/polyester mix / Combed ring-spun cotton / Inside roughened / Contrasting insets on sides and shoulders / Piping at the front of the shoulders / Ribbed bands with elastane on sleeves and waistband / 2 side pockets with concealed zip / JN869: lightly waisted / Washable at 60°C, suited for tumble-drying

**Material:**  
Outer fabric (290 g/m²): 70% cotton, 30% polyester

**Size:**  
JN869 XS / S / M / L / XL / XXL / 3XL / 4XL  
JN870 XS / S / M / L / XL / XXL / 3XL / 4XL / 5XL / 6XL



60° SIZE XS-6XL

**JN868 WORKWEAR HALF-ZIP SWEAT - COLOR -**

**Zipped sweatshirt with stand-up collar and contrasting insets**

Durable, easy-care cotton/polyester mix / Combed ring-spun cotton / Inside roughened / Contrasting insets on sides and shoulders / Piping at the front of the shoulders / Ribbed bands with elastane on sleeve cuffs and waistband / Washable at 60°C, suited for tumble-drying

**Material:**  
Outer fabric (290 g/m²): 70% cotton, 30% polyester

**Size:**  
XS / S / M / L / XL / XXL / 3XL / 4XL / 5XL / 6XL





60° SIZE XS-6XL

**JN857 LADIES' WORKWEAR POLO - COLOR -**

**JN858 MEN'S WORKWEAR POLO - COLOR -**

**Durable, easy care poloshirt with contrasting insets**

Material mix of cotton and polyester for excellent shape retention and washing resistance / Knitted polo collar and sleeve cuffs / Contrasting insets on sides and shoulders / Piping at the front of shoulder, collar with contrasting stripes / Necktape / JN858: button placket with 3 buttons / JN857: button placket with 4 buttons, lightly waisted / Washable at 60°C, suited for tumble drying

**Material:**

Outer fabric (200 g/m<sup>2</sup>): 50% cotton, 50% polyester

**Sizes:**

**JN857** XS / S / M / L / XL / XXL / 3XL / 4XL

**JN858** XS / S / M / L / XL / XXL / 3XL / 4XL / 5XL / 6XL



60° SIZE XS-6XL

**JN859 LADIES' WORKWEAR T-SHIRT - COLOR -**

**JN860 MEN'S WORKWEAR T-SHIRT - COLOR -**

**Durable, easy care T-shirt with contrasting insets**

Material mix of cotton and polyester for excellent shape retention and washing resistance / Contrasting insets on sides and shoulders / Piping at the front of shoulder / Neckline with elastane, neck tape / JN859: lightly waisted / Washable at 60°C, suited for tumble drying

**Material:**

Outer fabric (160 g/m<sup>2</sup>): 50% cotton, 50% polyester

**Sizes:**

**JN859** XS / S / M / L / XL / XXL / 3XL / 4XL

**JN860** XS / S / M / L / XL / XXL / 3XL / 4XL / 5XL / 6XL



Neckline with elastane, necktape

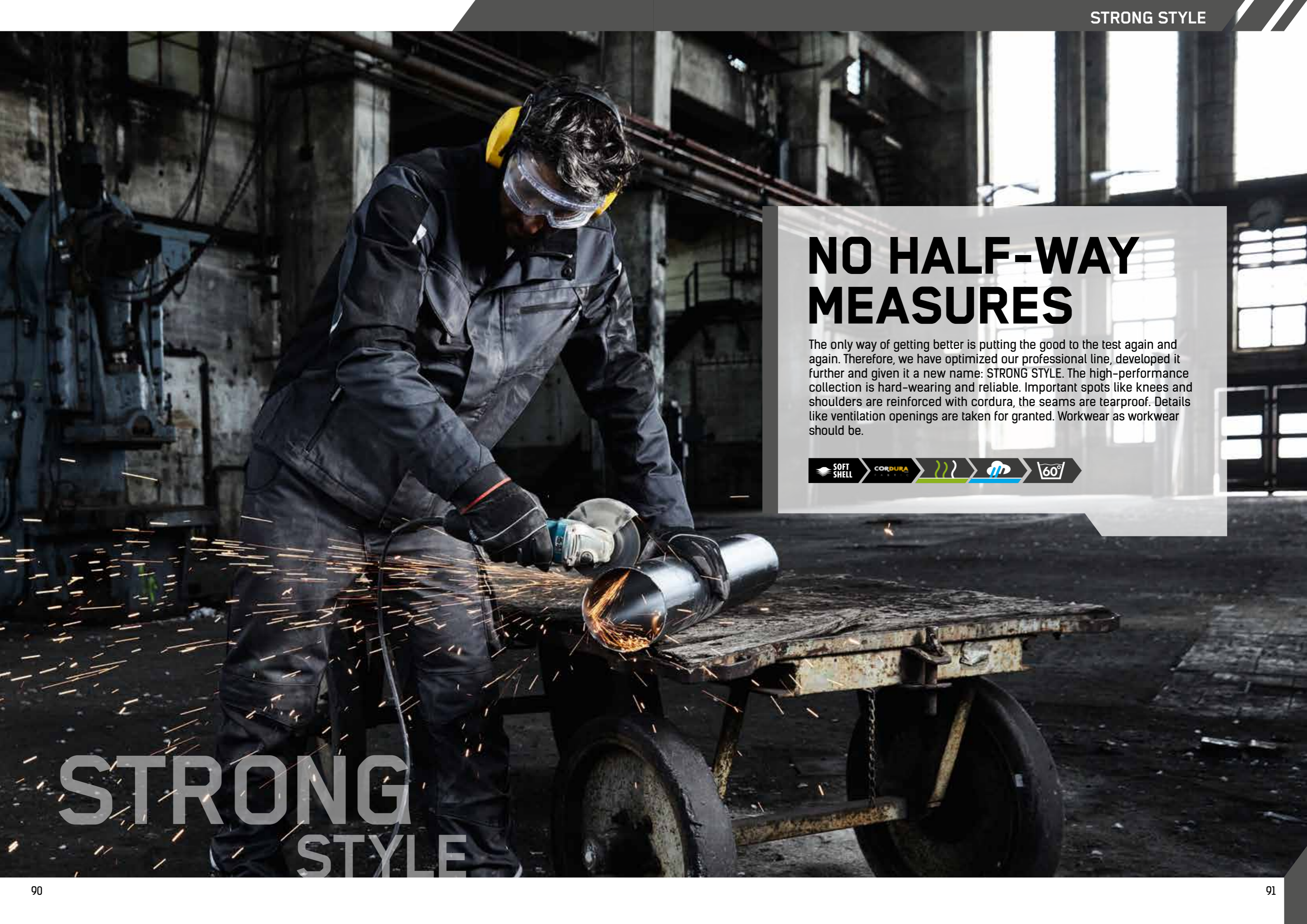
Washable at 60°C, suited for tumble drying

red/navy



carbon/red





# NO HALF-WAY MEASURES

The only way of getting better is putting the good to the test again and again. Therefore, we have optimized our professional line, developed it further and given it a new name: STRONG STYLE. The high-performance collection is hard-wearing and reliable. Important spots like knees and shoulders are reinforced with cordura, the seams are tearproof. Details like ventilation openings are taken for granted. Workwear as workwear should be.



# STRONG STYLE



JN822 WORKWEAR VEST - STRONG -



JN821 WORKWEAR JACKET - STRONG -



JN861 LADIES' KNITTED WORKWEAR FLEECE JACKET - STRONG -



JN862 MEN'S KNITTED WORKWEAR FLEECE JACKET - STRONG -



JN841 LADIES' WORKWEAR FLEECE JACKET - STRONG -



JN842 MEN'S WORKWEAR FLEECE JACKET - STRONG -



JN825 CRAFTSMEN SOFTSHELL VEST - STRONG -



JN824 CRAFTSMEN SOFTSHELL JACKET - STRONG -



JN833 WORKWEAR PANTS WITH BIB - STRONG -



JN832 WORKWEAR PANTS - STRONG -



JN855 LADIES' WORKWEAR FLEECE VEST - STRONG -



JN856 MEN'S WORKWEAR FLEECE VEST - STRONG -



JN845 WORKWEAR SOFTSHELL VEST - STRONG -



JN844 WORKWEAR SOFTSHELL JACKET - STRONG -



JN864 MEN'S KNITTED WORKWEAR FLEECE HALFZIP - STRONG -



MB6574 6 PANEL CRAFTSMEN CAP - STRONG -



JN835 WORKWEAR BERMUDAS - STRONG -



JN827 CRAFTSMEN T-SHIRT - STRONG -



JN828 CRAFTSMEN POLOSHIRT - STRONG -



JN834 WORKWEAR 3/4 PANTS - STRONG -



MB7121 KNITTED FLEECE WORKWEAR BEANIE - STRONG -



MB6621 6 PANEL WORKWEAR CAP - STRONG -





red/black



**JN832 WORKWEAR PANTS - STRONG -**

Specialized work pants with functional details

Sturdy, durable mixed fabrics / Elasticated waistband with belt loops / Knee area reinforced with CORDURA® / Tearproof triple stitched seams / Pockets, several tool pockets / 2 zipped pockets / Ruler pocket, pen holder, mobile phone pocket / Reflective details (without protective function/no PPE) at the front and back / Washable at 60°C, suited for tumble drying

**Material:**  
Outer fabric (260 g/m<sup>2</sup>): 65% polyester, 35% cotton / Trimming: 100% polyamide

**Sizes:**  
Short 25 / 26 / 27 / 28  
Standard 42 / 44 / 46 / 48 / 50 / 52 / 54 / 56 / 58 / 60 / 62  
Long 94 / 98 / 102 / 106 / 110



red/black    royal/navy    navy/navy



white/carbon    carbon/black    stone/black



dark-green/black    black/carbon



**JN832 POWERFUL**

The hard-wearing fabric and the extensive accents represent confidence, competence and assertiveness. A great appearance.

MB7121 page 157



Bib with adjustable, elasticated braces

Sturdy, durable mixed fabrics

Knee area reinforced with CORDURA®

Fashionable reflective elements

black/carbon



red/black

royal/navy

navy/navy

white/carbon

carbon/black

stone/black

dark-green/black

black/carbon



**JN833 WORKWEAR PANTS WITH BIB - STRONG -**

**Specialized overalls with functional details**

Sturdy, durable mixed fabrics / Elasticated waistband with belt loops / Bib with adjustable, elasticated braces / Knee area reinforced with CORDURA® / Tearproof triple stitched seams / Pockets, several tool pockets / 2 zipped pockets / Ruler pocket, pen holder, mobile phone pocket / Reflective details (without protective function/no PPE) at the front and back / Washable at 60°C, suited for tumble drying

**Material:**  
Outer fabric (260 g/m²): 65% polyester, 35% cotton /  
Trimming: 100% polyamide

**Sizes:**  
42 / 44 / 46 / 48 / 50 / 52 / 54 / 56 / 58 / 60 / 62



red/black

royal/navy



navy/navy

white/carbon



carbon/black

stone/black



dark-green/black

black/carbon



**JN835 WORKWEAR BERMUDAS - STRONG -**

Specialized work shorts with functional details

Sturdy, durable mixed fabrics / Pockets reinforced with CORDURA® / Tearproof triple stitched seams / Several tool pockets / 2 zipped pockets / Ruler pocket, pen holder, mobile phone pocket / Washable at 60°C, suited for tumble drying

**Material:**  
Outer fabric (260 g/m²): 65% polyester, 35% cotton / Trimming: 100% polyamide

**Sizes:**  
42 / 44 / 46 / 48 / 50 / 52 / 54 / 56 / 58 / 60 / 62



carbon/black



red/black

royal/navy

navy/navy

white/carbon



carbon/black

stone/black

dark-green/black

black/carbon



**JN834 WORKWEAR 3/4 PANTS - STRONG -**  
Specialized 3/4-pants with functional details

Sturdy, durable mixed fabrics / Elasticated / Knee area reinforced with CORDURA® / Tearproof triple stitched seams / Pockets, several tool pockets / 2 zipped pockets / Ruler pocket, pen holder, mobile phone pocket / Reflective details (without protective function/no PPE) at the back / Washable at 60°C, suited for tumble drying

**Material:**  
Outer fabric (260 g/m²): 65% polyester, 35% cotton / Trimming: 100% polyamide

**Sizes:**  
42 / 44 / 46 / 48 / 50 / 52 / 54 / 56 / 58 / 60 / 62



navy/navy

Pockets, several tool pockets

Tearproof triple stitched seams



# JN821 DURABLE

A jacket which does its job conscientiously. The durable fabric is in parts additionally reinforced with cordura, ventilation openings are positioned precisely.



carbon/black



SIZE S-6XL

## JN821 WORKWEAR JACKET - STRONG - Professional jacket with high quality equipment

Sturdy and durable mixed fabric / Stand-up collar with soft fleece inside / Shoulder part reinforced with CORDURA® / Full-length covered front zip with storm flap / Warm sleeve-bands inside / Spacious ventilation openings at the back / Side pockets, breast pocket and zipped inner pocket / Breast pocket with flap, mobile phone pocket inside / Reflective details (without protective function/no PPE) at the front and back / Washable at 60°C, suited for tumble drying

### Material:

Outer fabric (260 g/m²): 65% polyester, 35% cotton / Trimming: 100% polyamide

### Sizes:

S / M / L / XL / XXL / 3XL / 4XL / 5XL / 6XL



red/black

royal/navy

navy/navy

white/carbon



carbon/black

stone/black

dark-green/black

black/carbon





navy/navy



**JN822 WORKWEAR VEST - STRONG -**  
Professional vest with high quality equipment

Sturdy and durable mixed fabric / Stand-up collar with soft fleece inside / Shoulder part reinforced with CORDURA® / Full-length covered front zip with storm flap / Spacious ventilation openings at the back / Side pockets, breast pocket and zipped inner pocket / Breast pocket with flap, mobile phone pocket inside / Reflective details (without protective function/no PPE) at the front and back / Washable at 60°C, suited for tumble drying

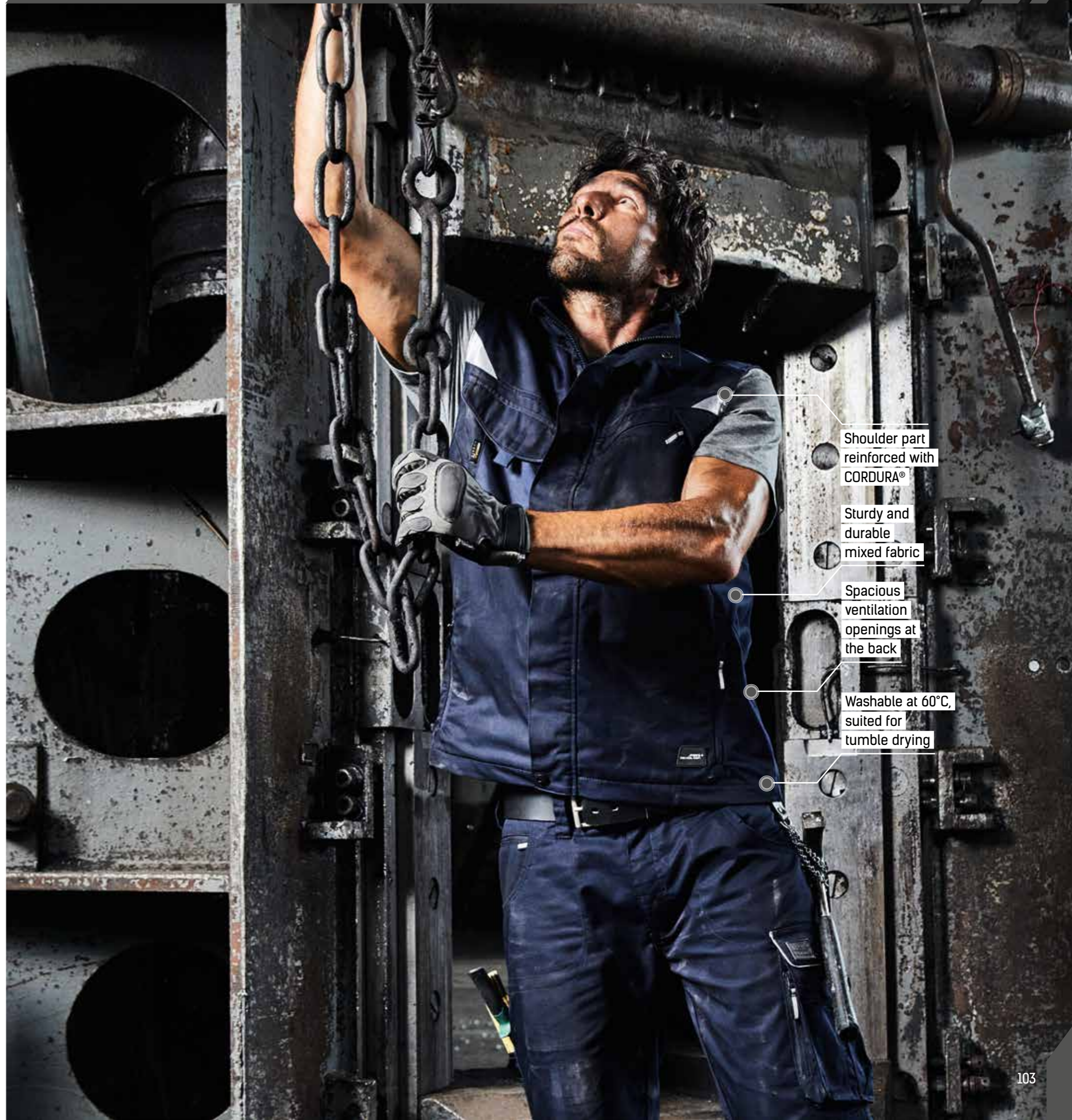
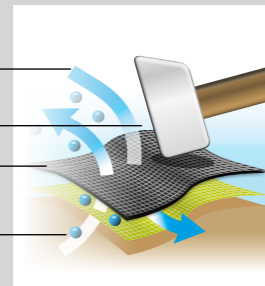
**Material:**  
Outer fabric (260 g/m²): 65% polyester, 35% cotton / Trimming: 100% polyamide

**Größe:**  
S / M / L / XL / XXL / 3XL / 4XL / 5XL / 6XL

**CORDURA®**

CORDURA® is a very sturdy, textured polyamide fabric, which is extremely tear- and abrasion-proof. Special yarns, specially developed weaving techniques, dyeing methods and additional textile finishing ensure that products with CORDURA® can be used as durable and comfortable workwear.

High breathability  
Tear- and abrasionproof  
CORDURA® Shell  
Lining



Shoulder part reinforced with CORDURA®

Sturdy and durable mixed fabric

Spacious ventilation openings at the back

Washable at 60°C, suited for tumble drying



Can do a lot, achieves a lot and can take a lot.

# JN844 HIGH-PERFORMANCE

CORDURA SOFT SHELL SIZE XS-6XL

## JN844 WORKWEAR SOFTSHELL JACKET - STRONG -

Professional softshell jacket with high-quality features

Durable and hard-wearing softshell material / Wind- and water-repellent (2,000 mm water column) / Breathable and permeable to water vapour (2,000 g/m<sup>2</sup>/24 h) / Stand-up collar / Shoulder area reinforced with CORDURA® / Full-length concealed zip with storm flap / Zipped side pockets and breast pocket / Breast pocket with flap, inner pockets / Reflective details (without protective function/no PPE) on sleeves and at the back

**Material:**

Outer fabric (320 g/m<sup>2</sup>): 100% polyester

**Sizes:**

XS / S / M / L / XL / XXL / 3XL / 4XL / 5XL / 6XL



red/black



red/black

royal/navy



navy/navy

white/carbon



carbon/black

stone/black



dark-green/black

black/carbon



black/black





**JN845 WORKWEAR SOFTSHELL VEST - STRONG -**

Professional softshell vest with high-quality features

Durable and hard-wearing softshell material / Wind- and water-repellent (2,000 mm water column) / Breathable and permeable to water vapour (2,000 g/m<sup>2</sup>/24 h) / Stand-up collar / Shoulder area reinforced with CORDURA® / Full-length concealed zip with storm flap / Zipped side pockets and breast pocket / Breast pocket with flap, inner pockets / Reflective details (without protective function/no PPE) on armholes and at the back

**Material:**  
Outer fabric (320 g/m<sup>2</sup>): 100% polyester

**Sizes:**  
XS / S / M / L / XL / XXL / 3XL / 4XL / 5XL / 6XL



dark-green/black





**JN824 CRAFTSMEN SOFTSHELL JACKET - STRONG -**

Professional softshell jacket with warm inner lining

Sturdy, durable softshell fabric / Wind- and water-repellent (2,000 mm water column) / Breathable and permeable to water vapour (2,000 g/m<sup>2</sup>/24h) / Inside stand-up collar with soft fleece / Detachable, adjustable hood / Shoulder part reinforced with CORDURA® / Full-length, covered zip with storm flap / Warm inner sleeve cuffs / Zipped side pockets, breast pocket and inner pocket / Breast pocket with flap, mobile phone pocket inside / Reflective details (without protective function/no PPE) on sleeves and at the back / Zip for decoration at the back

**Material:**  
Outer fabric: 100% polyester / Lining: 100% polyester / Trimming: 100% polyamide / Padding: 100% polyester

**Sizes:**  
XS / S / M / L / XL / XXL / 3XL / 4XL / 5XL / 6XL



stone/black



red/black royal/navy navy/navy white/carbon carbon/black stone/black dark-green/black black/carbon black/black



MB7500 page 157



**JN825 CRAFTSMEN SOFTSHELL VEST - STRONG -**

Professional softshell vest with warm inner lining

Sturdy, durable softshell fabric / Wind- and water-repellent (2,000 mm water column) / Breathable and permeable to water vapour (2,000 g/m<sup>2</sup>/24h) / Inside stand-up collar with soft fleece / Shoulder part reinforced with CORDURA® / Full-length, covered zip with storm flap / Zipped side pockets, breast pocket and inner pocket / Breast pocket with flap, mobile phone pocket inside / Reflective details (without protective function/no PPE) at the front and at the back / Zip for decoration at the back

**Material:**  
Outer fabric: 100% polyester / Lining: 100% polyester / Trimming: 100% polyamide / Padding: 100% polyester

**Sizes:**  
XS / S / M / L / XL / XXL / 3XL / 4XL / 5XL / 6XL

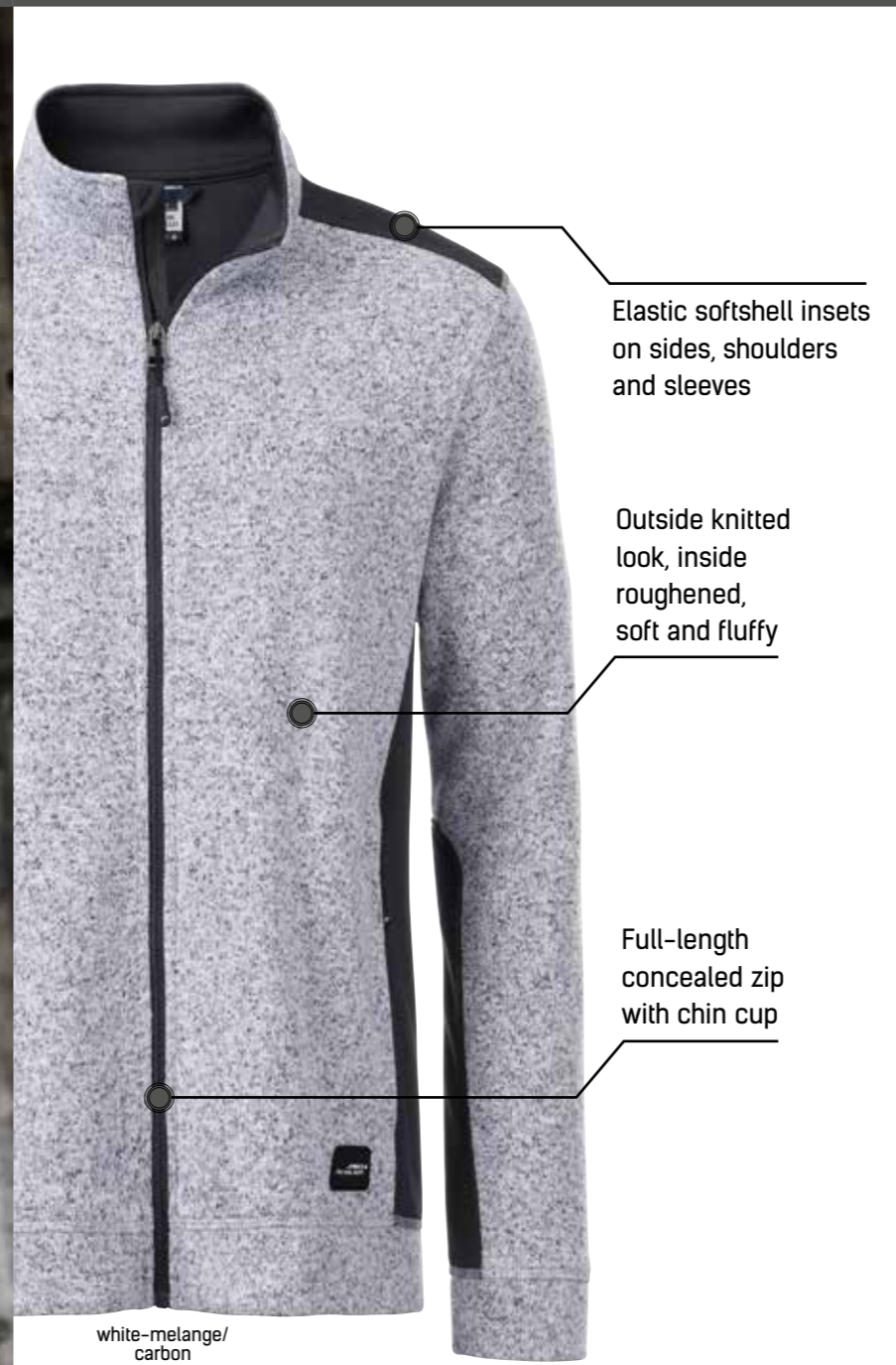


royal/navy



red/black royal/navy navy/navy white/carbon carbon/black stone/black dark-green/black black/carbon black/black





SIZE  
XS-6XL

**JN861 LADIES' KNITTED WORKWEAR FLEECE JACKET - STRONG -**

**JN862 MEN'S KNITTED WORKWEAR FLEECE JACKET - STRONG -**

Easy care knitted fleece jacket in material mix

Warm, soft, easy-care fabric in melange look / Outside knitted look, inside roughened, soft and fluffy / Elastic softshell insets on sides, shoulders and sleeves / 2 side pockets with concealed zip / Stand-up collar / Full-length concealed zip with chin cup / JN861: lightly waisted

**Material:**

Outer fabric (280 g/m<sup>2</sup>): 100% polyester

**Sizes:**

**JN861** XS / S / M / L / XL / XXL / 3XL / 4XL

**JN862** XS / S / M / L / XL / XXL / 3XL / 4XL / 5XL / 6XL



red-melange/  
black



royal-melange/  
navy



white-melange/  
carbon



carbon-melange/  
black



stone-melange/  
black



dark-green-  
melange/black

# JN864 FLEXIBLE

A troyer which mucks in. With its elastic softshell insets it increases your mobility when pushing, pulling and pressing the lever.



royal-melange/navy

SIZE  
XS-6XL

## JN864 MEN'S KNITTED WORKWEAR FLEECE HALF-ZIP - STRONG -

Easy-care knitted fleece troyer  
in material mix

Warm, soft, easy-care fabric in melange look /  
Outside knitted look, inside roughened, soft  
and fluffy / Elastic softshell insets on sides,  
shoulders and sleeves / Stand-up collar with  
concealed zip with chin cup

**Material:**

Outer fabric (280 g/m<sup>2</sup>): 100% polyester

**Sizes:**

XS / S / M / L / XL / XXL / 3XL / 4XL / 5XL / 6XL



red-  
melange/  
black



royal-  
melange/  
navy



white-  
melange/  
carbon



carbon-  
melange/  
black



stone-  
melange/  
black



dark-green-  
melange/  
black

MB6555 page 155



SIZE XS-6XL

**JN855 LADIES' WORKWEAR FLEECE VEST - STRONG -**  
**JN856 MEN'S WORKWEAR FLEECE VEST - STRONG -**  
 Durable fleece vest in material mix

Easy-care anti-pilling microfleece / Elastic softshell insets in contrasting color on the side / Concealed zip with chin protection / Stand-up collar / 2 zipped side pockets / JN855: lightly waisted

**Material:**  
 Outer fabric (280 g/m<sup>2</sup>): 100% polyester

**Sizes:**  
**JN855** XS / S / M / L / XL / XXL / 3XL / 4XL  
**JN856** XS / S / M / L / XL / XXL / 3XL / 4XL / 5XL / 6XL



black/carbon

Easy-care anti-pilling microfleece

Elastic softshell insets in contrasting color on sleeves and sides

SIZE XS-6XL

**JN841 LADIES' WORKWEAR FLEECE JACKET - STRONG -**  
**JN842 MEN'S WORKWEAR FLEECE JACKET - STRONG -**  
 Durable Fleece Jacket in mixed fabrics

Easy-care anti-pilling microfleece / Elastic softshell insets in contrasting color on sleeves and sides / Concealed zip with chin protection / Stand-up collar / 2 side pockets and zipped sleeve pocket / JN841: lightly waisted

**Material:**  
 Outer fabric (280 g/m<sup>2</sup>): 100% polyester

**Sizes:**  
**JN841** XS / S / M / L / XL / XXL / 3XL / 4XL  
**JN842** XS / S / M / L / XL / XXL / 3XL / 4XL / 5XL / 6XL



stone/black



stone/black

SIZE XS-6XL

**JN828 CRAFTSMEN POLOSHIRT - STRONG - Functional polo shirt**

Breathable, moisture-regulating and quick-drying / Light and comfortable / Contrasting piping and insets / Knitted polo collar with contrasting stripes / Button placket with 3 buttons

**Material:**  
Outer fabric (165 g/m<sup>2</sup>): 100% polyester

**Sizes:**  
XS / S / M / L / XL / XXL / 3XL / 4XL / 5XL / 6XL



red/black



royal/navy



navy/navy



white/carbon



carbon/carbon



stone/black



dark-green/black



black/carbon



royal/navy

SIZE XS-6XL

**JN827 CRAFTSMEN T-SHIRT - STRONG - Functional T-shirt**

Breathable, moisture-regulating and quick-drying / Light and comfortable / Contrasting piping and insets

**Material:**  
Outer fabric (165 g/m<sup>2</sup>): 100% polyester

**Sizes:**  
XS / S / M / L / XL / XXL / 3XL / 4XL / 5XL / 6XL



red/black

royal/navy

navy/navy

white/carbon



carbon/carbon

stone/black

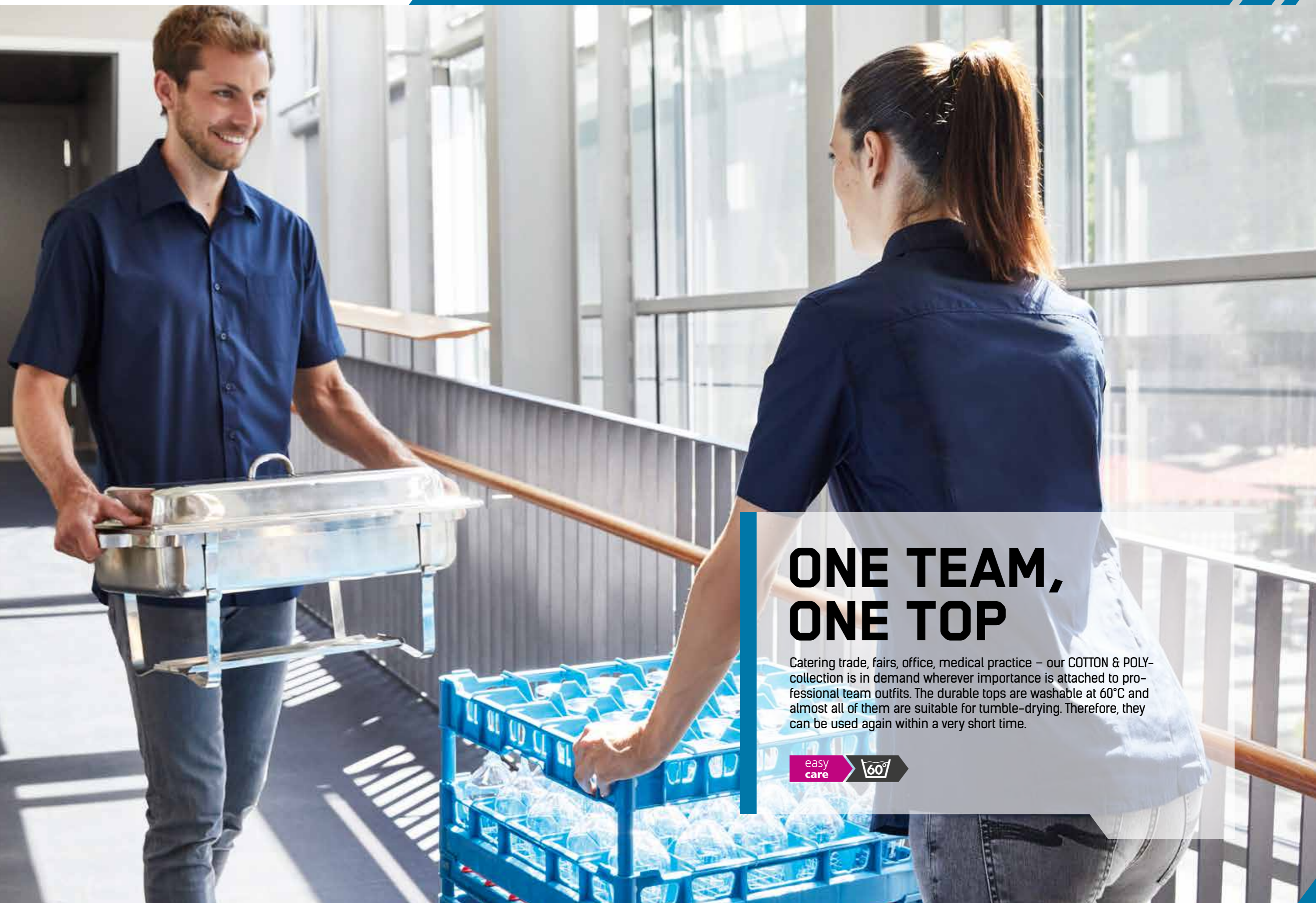
dark-green/black

black/carbon



**JN828 AIR-CONDITIONED**

Actions speak louder than words. This T-shirt is extremely quick-drying, moisture-regulating, light and comfortable.



## ONE TEAM, ONE TOP

Catering trade, fairs, office, medical practice – our COTTON & POLY-collection is in demand wherever importance is attached to professional team outfits. The durable tops are washable at 60°C and almost all of them are suitable for tumble-drying. Therefore, they can be used again within a very short time.

easy  
care

60°

60° easy care SIZE XS-6XL

**JN641 LADIES' BUSINESS SHIRT  
LONG-SLEEVED**

**JN642 MEN'S BUSINESS SHIRT  
LONG-SLEEVED**

Classic shirt made of durable mixed fabrics

Easy-care poplin with easy-care finish / Rounded hem / Washable at 60°C / JN641: Waisted, feminine cut / JN642: Classic fit, lightly waisted, breast pocket, pleats on rear yoke

**Material:**  
Outer fabric (105 g/m²): 50% cotton, 50% polyester

**Sizes:**  
JN641 XS / S / M / L / XL / XXL / 3XL  
JN642 S / M / L / XL / XXL / 3XL / 4XL / 5XL / 6XL



JN641 white

JN642 steel



60° easy care SIZE XS-6XL

**JN643 LADIES' BUSINESS SHIRT  
SHORT-SLEEVED**

**JN644 MEN'S BUSINESS SHIRT  
SHORT-SLEEVED**

Classic shirt made of durable mixed fabrics

Easy-care poplin with easy-care finish / Rounded hem Washable at 60°C / JN643: Waisted, feminine cut / JN644: Classic fit, lightly waisted, breast pocket, pleats on rear yoke

**Material:**  
Outer fabric (105 g/m²): 50% cotton, 50% polyester

**Sizes:**  
JN643 XS / S / M / L / XL / XXL / 3XL  
JN644 S / M / L / XL / XXL / 3XL / 4XL / 5XL / 6XL



JN644 navy

JN643 navy



60°

**JN836 WORKWEAR SWEAT JACKET**

Sweat jacket with stand-up collar and zip

Durable, easy-care polyester/cotton mixture / Combed ring-spun cotton / Inside roughened / Elastic ribbed knitted bands on sleeve and waistband / 2 side pockets with concealed zipper / 60°C washable, suitable for tumble-drying

**Material:**  
Outer fabric (290 g/m<sup>2</sup>): 70% cotton, 30% polyester

**Sizes:**  
XS / S / M / L / XL / XXL / 3XL / 4XL / 5XL / 6XL



Combed ring-spun cotton

60°C washable, suitable for tumble-drying

black



white gold-yellow orange red wine aqua



turquoise royal navy lime-green dark-green grey-heather



dark-grey carbon stone brown black



**JN836 STRAIGHT-FORWARD**

Straightforward, comfortable and hard-wearing. Ideal for temperatures for which a T-shirt is too light and a classic jacket is too much of a good thing.



60° SIZE XS-6XL

**JN831 WORKWEAR HALF ZIP SWEAT**  
Sweatshirt with stand-up collar and zip

Durable easy-care cotton-polyester blend / Combed ring-spun cotton / Inside roughened / Elastic ribbed knitted bands on sleeve and waistband / Washable at 60°C, suitable for tumble-drying

**Material:**  
Outer fabric (290 g/m<sup>2</sup>): 70% cotton, 30% polyester  
**Sizes:**  
XS / S / M / L / XL / XXL / 3XL / 4XL / 5XL / 6XL



royal

60° SIZE XS-6XL

**JN840 WORKWEAR SWEAT**  
Classic round neck sweatshirt

Durable, easy-care cotton/polyester mix / Combed ring-spun cotton / Inside roughened / Elastic ribbed bands on neckline, sleeves and waistband / Washable at 60°C, suitable for tumble drying

**Material:**  
Outer fabric (290 g/m<sup>2</sup>): 70% cotton, 30% polyester  
**Sizes:**  
XS / S / M / L / XL / XXL / 3XL / 4XL / 5XL / 6XL



Durable, easy-care cotton/polyester mix

Inside roughened

grey-heather



60° SIZE XS-6XL

**JN867 LADIES' WORKWEAR POLO POCKET**

**JN846 MEN'S WORKWEAR POLO POCKET**

Easy-care and durable polo shirt with breast pocket

Material mix of cotton and polyester for excellent shape retention and washing resistance / Knitted polo collar and sleeve bands / Breast pocket with flap and button, loose pocket pouch for easy decoration / Necktape / Loose collar patch for easy labelling / JN846: button placket with 3 buttons / JN867: button placket with 4 buttons, lightly waisted / Washable at 60°C, suited for tumble-drying

**Material:**

Outer fabric (200 g/m²): 50% cotton, 50% polyester

**Sizes:**

**JN867** XS / S / M / L / XL / XXL / 3XL / 4XL

**JN846** XS / S / M / L / XL / XXL / 3XL / 4XL / 5XL / 6XL



JN846 turquoise



60° SIZE XS-6XL



JN866 orange

JN865 orange



**JN865 LADIES' WORKWEAR POLO POCKET LONGSLEEVE**

**JN866 MEN'S WORKWEAR POLO POCKET LONGSLEEVE**

Durable, easy care long-sleeved poloshirt with breast pocket

Material mix of cotton and polyester for excellent shape retention and washing resistance / Knitted polo collar, sleeve bands with elastane / Breast pocket with flap and button, loose pocket pouch for easy decoration / Necktape / Loose collar patch for easy labelling / JN866: button placket with 3 buttons / JN865: button placket with 4 buttons, lightly waisted / Washable at 60°C, suited for tumble-drying

**Material:**

Outer fabric (200 g/m²): 50% cotton, 50% polyester

**Sizes:**

**JN865** XS / S / M / L / XL / XXL / 3XL / 4XL

**JN866** XS / S / M / L / XL / XXL / 3XL / 4XL / 5XL / 6XL



MB041 page 155



60° SIZE XS-6XL

**JN829 LADIES' WORKWEAR POLO**  
**JN830 MEN'S WORKWEAR POLO**  
 Easy-care, sturdy polo shirt

Thanks to a material mix of cotton and polyester it keeps its shape and has an excellent washing-resistance / Knitted polo collar and sleeveband cuffs / Necktape / Loose collar patch for easy labelling / JN829: button placket with 4 buttons, side slits / JN830: button placket with 3 buttons / Washable at 60°C, suitable for tumble-drying

**Material:**  
 Outer fabric (200 g/m<sup>2</sup>): 50% cotton, 50% polyester

**Sizes:**  
**JN829** XS / S / M / L / XL / XXL / 3XL / 4XL  
**JN830** XS / S / M / L / XL / XXL / 3XL / 4XL / 5XL / 6XL

60° SIZE XS-6XL

**JN837 LADIES' WORKWEAR T-SHIRT**  
**JN838 MEN'S WORKWEAR T-SHIRT**  
 Durable, easy-care T-shirt

Thanks to a material mix of cotton and polyester it keeps its shape and has an excellent washing resistance / Neck band with elastane, necktape / JN837: V-neck, lightly waisted / JN838: Round neck / Washable at 60°C, suitable for tumble drying

**Material:**  
 Outer fabric (160 g/m<sup>2</sup>): 50% cotton, 50% polyester

**Sizes:**  
**JN837** XS / S / M / L / XL / XXL / 3XL / 4XL  
**JN838** XS / S / M / L / XL / XXL / 3XL / 4XL / 5XL / 6XL





# ALWAYS READY FOR TAKE-OFF

Carefully thought-out basics are suitable for many purposes. Our high-performance products have excellent functions for the day-to-day work on board. The hard-wearing classics go equally well into a locker as into a private wardrobe.

SOFT SHELL



60°



**JN1001 LADIES' WINTER SOFTSHELL JACKET**

**JN1000 MEN'S WINTER SOFTSHELL JACKET**

Fashionable winter softshell jacket

3-layer functional fabric with TPU membrane / Wind- and water-proof (5,000 mm water column), breathable and permeable to vapour / Non-taped seams / Detachable, padded and lined hood, warming fleece collar / Zip under the sleeves for additional ventilation, full-length storm flap / Fashionable reflective piping on shoulders and front pockets / 2 front pockets, 1 breast pocket, breast and mobile phone pocket on the inside / 2-way zip / Elastic cord with stoppers on waistband and hood / JN1001: Slightly waisted / Zip for decoration at the back

**Material:**

Outer fabric (330 g/m<sup>2</sup>): 95% polyester, 5% elastane / Lining: 100% polyester / Padding: 100% polyester

**Sizes:**

JN1001 S / M / L / XL / XXL

JN1000 S / M / L / XL / XXL / 3XL



carbon



orange

red

aqua

navy

carbon

black

The slim-fit winter jacket is weather-proof and due to its moisture regulation it assures a pleasant climate inside.

**JN1001  
CASUAL,  
RELIABLE**



MB6555 page 155

3-layer functional fabric with TPU membrane

Zip under the sleeves for additional ventilation, full-length storm flap





**JN1021 LADIES' SOFTSHELL JACKET**

**JN1020 MEN'S SOFTSHELL JACKET**

Stylish softshell jacket

Wind- and water-proof 3 layer functional fabric with TPU membrane (2,000 mm water column) / Non-taped seams / Breathable (2,000 g/m<sup>2</sup>/24h) / Soft, casual stretch fabric / 2 side pockets with zipper / 2 inner pockets / JN1021: Slightly waisted / Elastic drawstring with stopper at hem

**Material:**  
Outer fabric (270 g/m<sup>2</sup>): 90% polyester, 10% elastane

**Sizes:**  
JN1021 S / M / L / XL / XXL  
JN1020 S / M / L / XL / XXL / 3XL



orange



**JN1023 LADIES' SOFTSHELL VEST**

**JN1022 MEN'S SOFTSHELL VEST**

Stylish softshell vest

Wind and water-proof 3 layer functional fabric with TPU membrane (2,000 mm water column) / Non-taped seams / Breathable (2,000 g/m<sup>2</sup>/24h) / Soft, sporty stretch fabric / 2 side pockets with zipper / 2 inner pockets / JN1023: Slightly waisted / Elastic drawstring with stopper at hem

**Material:**  
Outer fabric (270 g/m<sup>2</sup>): 90% polyester, 10% elastane

**Sizes:**  
JN1023 S / M / L / XL / XXL  
JN1022 S / M / L / XL / XXL / 3XL



TPU membrane (2,000 mm water column)

Soft, sporty stretch fabric

black



carbon



**JN137 LADIES' SOFTSHELL JACKET**

**JN135 MEN'S SOFTSHELL JACKET**

**Trendy softshell jacket**

Functional 3-layer-fabric with TPU membrane / Windproof, breathable and water-proof (5,000 mm water column) / Non-taped seams / Inside made of micro fleece, mesh lining at the front / 2 zipped side pockets / Elastic drawstring with stoppers on waist / Zip in front lining for embroideries / JN135: 1 vertical breast pocket with zip / JN137: Slightly waisted

**Material:**

Outer fabric (330 g/m²): 95% polyester, 5% elastane

**Sizes:**

**JN137** S / M / L / XL / XXL

**JN135** S / M / L / XL / XXL / 3XL / (4XL / 5XL\*)



off-white

pop-orange

red



aqua

olive

brown



carbon

navy

black



red

\* JN135 black/navy available in 4XL, 5XL



**JN138 LADIES' SOFTSHELL VEST**

**JN136 MEN'S SOFTSHELL VEST**

**Functional vest made of softshell**

Functional 3-layer-fabric with TPU membrane / Wind-proof, breathable and water-proof (5,000 mm water column) / Non-taped seams / Inside made of micro fleece, mesh lining at the front / 2 zipped side pockets / Elastic drawstring with stoppers on waist / Zip in front lining for embroideries / JN136: Vertical breast pocket with zip / JN138: Slightly waisted

**Material:**

Outer fabric (330 g/m²): 95% polyester, 5% elastane

**Sizes:**

**JN138** S / M / L / XL / XXL

**JN136** S / M / L / XL / XXL / 3XL



off-white

pop-orange

red

aqua

navy



olive

brown

carbon

black



MB074 page 159



stone/black

SIZE  
S-4XL

### JN810 WORKWEAR JACKET

Durable, padded jacket with detachable sleeves

Wind-, water- and dirt-repellent (600 mm water column) / Detachable sleeves with zip / Inside of collar made of warm fleece / 2 big breast pockets, mobile phone pocket and pencil compartment in right-hand breast pocket / Practical zipped sleeve pocket / 2 spacious inner pockets with additional mobile phone pocket / Knitted bands on sleeves and waist / Reflective piping (without protective function/no PPE) on the sleeves, at the front and at the back / Zip for decoration at the back and at left-hand breast pocket

**Material:**

Outer fabric: 100% polyester / Lining: 100% polyamide / Padding: 100% polyester

**Sizes:**

S / M / L / XL / XXL / 3XL / 4XL



stone/black



red/navy



royal/navy



dark-green/black



navy/navy



carbon/black



black/black



black



navy

SIZE  
S-3XL

### JN812 PILOT JACKET 3 IN 1

3 in 1 jacket in blouson style

Winter jacket, between-seasons jacket and vest in one / Wind-, water- and dirt-repellent (600 mm water column) / Inner vest made of sherpa fleece detachable by zip / Detachable collar made of sherpa fleece, sleeves detachable by zip / 2 big zipped breast pockets with mobile phone pocket, 2 side pockets / Practical zipped sleeve pocket, 2 spacious inner pockets / Vest with 1 inner pocket / Knitted bands on sleeves and waist / Reflective piping (without protective function/no PPE) on shoulders and back / Zip for decoration at the back

**Material:**

Outer fabric: 60% polyester, 40% cotton / Lining: 100% polyester / Padding: 100% polyester

**Sizes:**

S / M / L / XL / XXL / 3XL



A great combination: A padded vest and durable pants. Both are dirt-, water-repellent and wind-proof. Professionals will love the multitude of pockets.

## JN813/JN814 DIRT-RESISTANT COMBINATION

SIZE  
S-3XL

### JN813 WORKWEAR VEST

#### Sturdy padded vest

Wind, water and dirt repellent (600 mm water column) / Collar lined with warm fleece / 2 large front pockets / Mobile phone pocket and pen holder on right breast pocket / 2 spacious inside pockets, mobile phone pocket / Extended back / Reflective piping (without protective function/no PPE) on the front and at the back / Zip for decoration at the back and left hand breast pocket

#### Material:

Outer fabric: 100% polyester / Lining: 100% polyamide / Padding: 100% polyester

#### Sizes:

S / M / L / XL / XXL / 3XL



stone



navy



carbon



black

BIONIC  
FINISHEO

SIZE  
S-3XL

### JN814 WORKWEAR PANTS

#### Sturdy workwear trousers

Water and dirt repellent (600 mm water column) / Elasticated waist with side inset / 2 side pockets, 2 back pockets / 1 large pocket with reflective tape (without protective function/no PPE) on right thigh / Multiple small pockets and loop for tools / Knee pad pockets

#### Material:

Outer fabric (280 g/m<sup>2</sup>): 65% polyester, 35% cotton

#### Sizes:

S / M / L / XL / XXL / 3XL



stone



navy



carbon



black



stone







red

breast pocket  
13 x 13 cm

Brushed inside

60°  
SIZE S-3XL

**JN924 MEN'S ROUND SWEAT POCKET**

High quality sweat shirt with pocket

Brushed inside / Combed ring-spun cotton / Durable twin needle stitching on shoulders, waist, neck and armholes / Cuffs with elastane / Necktape, half-moon in neck washable up to 60°C / 3-ply sweat quality

**Material:**  
Outer fabric (300 g/m<sup>2</sup>): 80% cotton, 20% polyester

**Sizes:**  
S / M / L / XL / XXL / 3XL



white ash



red royal



navy khaki



dark-green grey-heather



graphite black

40°  
SIZE S-3XL

**JN922 MEN'S POLO POCKET**

Classic polo shirt with pocket

Finely woven piqué / Combed ring-spun cotton / Casual cut with split hem / Ribbed collar and cuffs / Twin-needle stitching on shoulders and armholes / Matching buttons / Breast pocket / 40°C washable, shape-retaining

**Material:**  
Outer fabric (200 g/m<sup>2</sup>): 100% cotton

**Sizes:**  
S / M / L / XL / XXL / 3XL



MB6192 page 153



Ribbed collar and cuffs

Finely woven piqué



navy



dark-green

60° SIZE S-6XL

**JN802 WORKWEAR-T WOMEN**  
**JN800 WORKWEAR-T MEN**

Durable classic T-shirt

Pre-shrunk high-quality single-jersey that keeps its shape / Combed ring-spun cotton / Cut allows optimum room to move / Twin-needle stitching for high stability, necktape / JN802: Slightly waisted / White washable up to 95°C, suitable for tumble-drying / Colored washable up to 60°C, suitable for tumble-drying

**Material:**

Outer fabric (180 g/m²): 100% cotton

**Sizes:**

JN802 S / M / L / XL / XXL

JN800 S / M / L / XL / XXL / 3XL / 4XL / 5XL / 6XL



orange



60° SIZE S-6XL

**JN803 WORKWEAR POLO WOMEN**  
**JN801 WORKWEAR POLO MEN**

Durable classic polo shirt

Pre-shrunk high-quality piqué-jersey, keeps its shape / Combed ring-spun cotton / Cut allows optimum room to move / Knitted polo collar and sleevebands, twin-needle stitching, necktape / JN803: Slightly waisted / Side slits / White washable up to 95°C, suitable for tumble-drying / Colored washable up to 60°C, suitable for tumble-drying

**Material:**

Outer fabric (220 g/m²): 100% cotton

**Sizes:**

JN803 S / M / L / XL / XXL

JN801 S / M / L / XL / XXL / 3XL / 4XL / 5XL / 6XL



MB036 page 154



60° SIZE S-3XL

**JN025 WORKER POLO**

Durable and easy-care piqué polo shirt for leisure activities and work

Very durable material composition with polyester and cotton / Knitted polo collar, necktape / Side slits, buttons in matching color / Twin needle stitching on shoulders, neckline and armlines / Washable up to 60°C, suitable for tumble-drying

**Material:**  
Outer fabric (190 g/m²): 65% polyester, 35% cotton

**Sizes:**  
S / M / L / XL / XXL / 3XL



**JN200 SAFETY VEST**  
**JN200K SAFETY VEST JUNIOR**  
Safety Vest, suitable for print

One size S-XXL for adults / One size 140-164 for children / Fluorescent material with reflective stripes / EN ISO 20471 : 2013 class 2 / hook and loop fastener / Vest can be packed into a separate bag

**Material:**  
Outer fabric: 100% polyester

**Sizes:**  
one size



40° SIZE S-3XL

**JN920 MEN'S ROUND-T POCKET**

Classic T-shirt with breast pocket

Combed ring-spun cotton / Round neck with elastane and necktape / Twin-needle stitching on shoulders, neck and armholes / Sewn-on breast pocket / 40°C washable, shape retaining

**Material:**  
Outer fabric (180 g/m²): 100% cotton

**Sizes:**  
S / M / L / XL / XXL / 3XL



**JN815 SAFETY VEST ADULTS**

**JN815K SAFETY VEST KIDS**

Safety vest, suitable for print

One size S-XXL for adults / One size 140-164 for children / Reflective tape across the front and back / hook and loop fastener / EN ISO 20471 : 2013 class 2

**Material:**  
Outer fabric: 100% polyester

**Sizes:**  
one size





# PROFESSIONALS FOR THE HEAD

For the building site, for the kitchen, for the workshop, for the lab. Or quite simply for a casual look in day-to-day life: Our caps and beanies by myrtle beach are available in countless variants. What they all have in common is their high standard of quality and wearing comfort.

**NEW** RECYCLED POLYESTER

## MB6234 6 PANEL WORKWEAR CAP - SOLID - High-quality 6 panel cap with reflective elements (without protective function/ no PPE)

Recycled polyester / 6 embroidered ventilation holes / 6 decorative stitching lines on the peak / Laminated front panels / Pleasant to wear thanks to padded sweatband / Clip adjuster in mat silver with metal eyelet

**Material:**  
Outer fabric: 100% polyester (recycled)  
**Sizes:**  
one size



**NEW**

## MB6235 6 PANEL WORKWEAR CAP - COLOR - 6 panel cap with sun protection

Hard-wearing fabric / 6 embroidered ventilation holes / 6 decorative stitching lines on the peak / Laminated front panels / Pleasant to wear thanks to padded sweatband / Clip adjuster in mat silver with metal eyelet

**Material:**  
Outer fabric: 100% polyester  
**Sizes:**  
one size





**MB6621 6 PANEL WORKWEAR CAP - STRONG -**

High-quality 6 panel cap

Durable, hard-wearing mixed material / 6 embroidered ventilation holes / 6 decorative stitching lines on the peak / Laminated front panels / Pleasant to wear due to padded sweatband / Clip fastener in mat silver with metal eyelet

**Material:**  
Outer fabric: 65% polyester, 35% cotton

**Sizes:**  
one size



black/lime-green

**MB6574 6 PANEL CRAFTSMEN CAP - STRONG -**

6 Panel sandwich cap in sturdy workwear style

Design elements in the style of workwear James & Nicholson on peak and rear panel / Sturdy fabrics / Unbrushed Surface / 6 embroidered ventilation holes in contrasting color / Laminated front panels / Padded sweatband / Metal buckle in mat silver with press stud and metal eyelet

**Material:**  
Outer fabric: 100% cotton

**Sizes:**  
one size



**MB024 6 PANEL SANDWICH CAP**

Sandwich cap in a multitude of color combinations

6 embroidered ventilation holes / 6 stitching lines on the peak / Front panels laminated / Padded satin sweatband / Clip fastener with brass buckle and embroidered eyelet / Super heavy brushed cotton

**Material:**  
Outer fabric: 100% cotton

**Sizes:**  
one size





**MB6192 SECURITY CAP**

Original 6 panel cap with reflective border around the peak (without protective function/no PPE)

6 embroidered ventilation holes / 6 decorative stitching lines on the peak / Low profile / Original 6 panel cap with reflective border around the peak (without protective function/no PPE) / Reflective hook and loop fastener (without protective function/no PPE)

**Material:**  
Outer fabric: 100% cotton

**Sizes:**  
one size



signal-red

**MB6111 6 PANEL RAVER CAP**

Classic allround cap in many color combinations

6 embroidered ventilation holes / 8 decorative stitching lines on the peak / Low-profile Padded satin sweatband / Color black also available in headsize 60 cm / Metal buckle in mat silver with press stud and embroidered eyelet / Heavy brushed cotton

**Material:**  
Outer fabric: 100% cotton

**Sizes:**  
one size



**MB6225 SAFETY CAP**

6 panel cap with reflective elements (without protective function/no PPE)

4 embroidered ventilation holes / 6 decorative stitching lines on the peak / 6 panel cap with reflective elements (without protective function/no PPE) / Reflective insets on the panels (without protective function/no PPE) / Laminated front panels / hook and loop fastener

**Material:**  
Outer fabric: 100% polyester

**Sizes:**  
one size



**MB6556 POWERCAP™**  
**3-WAY LIGHTING**

**LED Premium 6 Panel Cap**

3 LED diodes (3-way lighting technology) / Including 4 batteries CR-2032 for min. 75 hrs / Easy to switch on and off at the touch of a button on the lower peak / 6 embroidered ventilation holes / Low-profile / Padded satin sweatband / hook and loop fastener / Super heavy brushed cotton

**Material:**  
Outer fabric: 100% cotton  
**Sizes:**  
one size



**MB6555 MILITARY SANDWICH CAP**

Sandwich cap in military style made of durable cotton canvas

4 lateral metal eyelets / Padded cotton sweatband / hook and loop fastener

**Material:**  
Outer fabric: 100% cotton

**Sizes:**  
one size



**MB041 BANDANA HAT**

Trendy bandana to be tied up at the neck

**Material:**  
Outer fabric: 97% polyester, 3% cotton

**Sizes:**  
one size



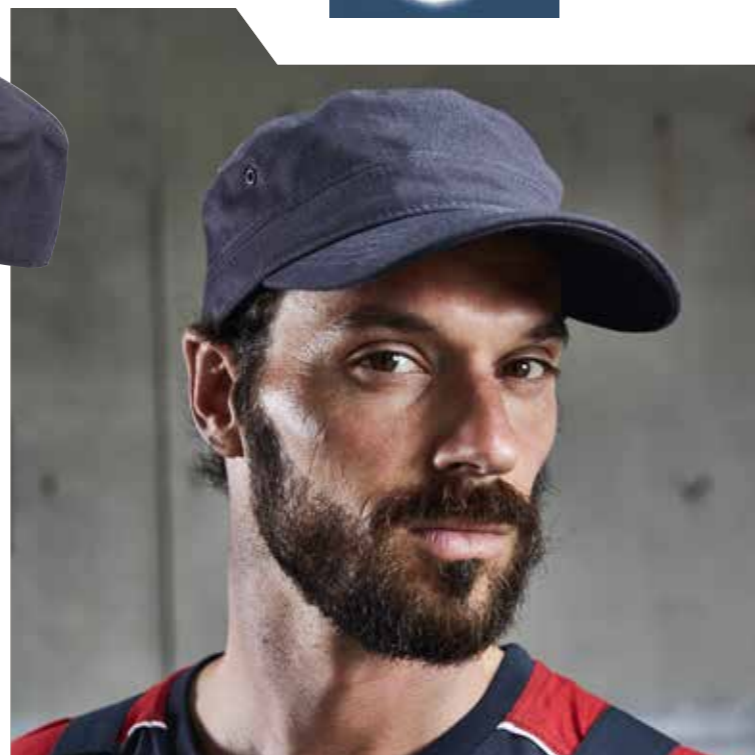
**MB036 NEON CAP**

Functional 6 panel cap in loud neon colors

2 embroidered ventilation holes / 4 stitching lines on the peak / Contrasting piping around the cap / Laminated front panels / Padded satin sweat band / Reflective hook and loop fastener and border around the peak (without protective function/no PPE)

**Material:**  
Outer fabric: 100% polyamide

**Sizes:**  
one size



**MB095 MILITARY CAP**

Trendy cap in military style made of durable cotton fabric

4 metal eyelets on the sides / Padded cotton sweat band / hook and loop fastener

**Material:**  
Outer fabric: 100% cotton

**Sizes:**  
one size





**MB007 CABRIO CAP**

Flat hat with press-stud on the peak

Cotton sweatband / hook and loop fastener

**Material:**

Outer fabric: 100% cotton

**Sizes:**

one size



white



**MB022 6 PANEL CHEF CAP**

Trendy cap without peak

2 embroidered ventilation holes / Knitted brim / Padded satin sweatband / hook and loop fastener / Super heavy brushed cotton

**Material:**

Outer fabric: 100% cotton

**Sizes:**

one size



black

light-khaki

red

navy

dark-green

black

**NEW**

**MB7141 REFLECTIVE BEANIE**

Classic knitted beanie with a reflective stripe on the brim (without protective function / no PPE)

Twin-layer knitting

**Material:**

Outer fabric: 100% polyacrylic

**Sizes:**

one size



bright-yellow/silver

bright-orange/silver

navy/silver

black/silver

navy/silver



**MB7121 KNITTED FLEECE WORKWEAR BEANIE - STRONG -**

Knitted beanie in melange look

Outside: Knitted look / Inside and wide trimming on the outside: roughened - soft and fluffy

**Material:**

Outer fabric: 100% polyester

**Sizes:**

one size



white-melange/carbon

stone-melange/black

red-melange/black

royal-melange/navy

dark-green-melange/black

carbon-melange/black



carbon-melange/black



**MB7500 KNITTED CAP**

Classic knitted cap in a lot of colors

Twin layer knitting

**Material:**

Outer fabric: 100% polyacrylic

**Sizes:**

one size



sand



white

off-white

bright-yellow

yellow

orange

bright-pink

red

bright-orange

burgundy

magenta

dark-purple

light-blue

aqua

royal

mint

petrol

navy

dark-navy

grey-melange

light-grey-melange

black

sand

chocolate

bright-green

lime-green

smaragd

dark-green

olive





navy



**MB7937 WARM KNITTED CAP**

Warm knitted cap with Thinsulate™ lining

Wide brim / Coarse knit

**Material:**

Outer fabric: 100% polyacrylic / Padding: 100% polyester

**Sizes:**

one size



red

navy

dark-grey-melange

black

**THINSULATE™ INSULATION**

The light-weight thermal insulation affords optimum protection against cold despite its minimum thickness. It even keeps you warm in damp or wet conditions. Thinsulate™ INSULATION offers excellent comfort and allows optimum room to move. It is extremely breathable, durable and easy-care.

Drying

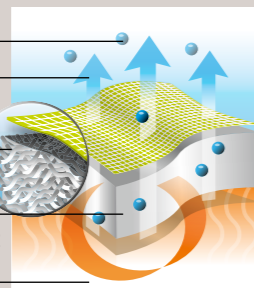
Breathable

Microstructure

Thinsulate™

Shell

Thermally efficient system



royal



**MB7551 KNITTED CAP THINSULATE™**

Warm knitted cap with interlining made of Thinsulate™

Twin layer knitting

**Material:**

Outer fabric: 100% polyacrylic / Interlining: 100% polyester

**Sizes:**

one size



off-white

neon-yellow

red

burgundy

royal

navy

light-grey

dark-grey-melange

black

dark-green

olive

NEW COLOR



**MB6503 ECONOMIC X-TUBE POLYESTER**

Multi-functional tube that can be worn in 12 different ways

Size: approx. 25 x 50 cm

**Material:**

Outer fabric (120 g/m²): 100% polyester

**Sizes:**

one size



blue-melange



**MB074 X-TUBE COTTON**

Multi-functional tube fabric with 12 possibilities to wear

Very elastic jersey / Size: approx. 25 x 50 cm

**Material:**

Outer fabric (145 g/m²): 95% cotton, 5% elastane

**Sizes:**

one size



black



# FUNCTIONS & FEATURES

Whoever really wants quality, will also invest in details. Therefore, the workwear of James & Nicholson is equipped with high-quality functional materials and finishing. Let us give you an overview of the brands and functions.



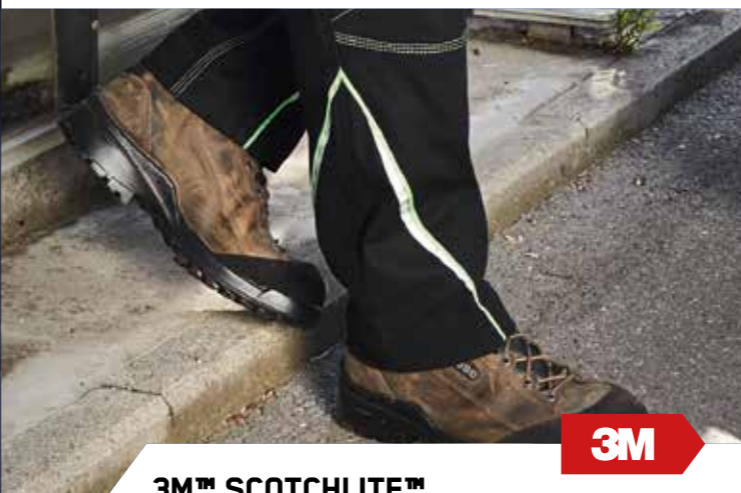
## CORDURA<sup>®</sup>

CORDURA<sup>®</sup> is a very sturdy, textured polyamide fabric, which is extremely tear- and abrasion-proof. Special yarns, specially developed weaving techniques, dyeing methods and additional textile finishing ensure that products with CORDURA<sup>®</sup> can be used as durable and comfortable workwear.



## THINSULATE™ INSULATION

The light-weight thermal insulation affords optimum protection against cold despite its minimum thickness. It even keeps you warm in damp or wet conditions. Thinsulate™ INSULATION offers excellent comfort and allows optimum room to move. It is extremely breathable, durable and easy-care.



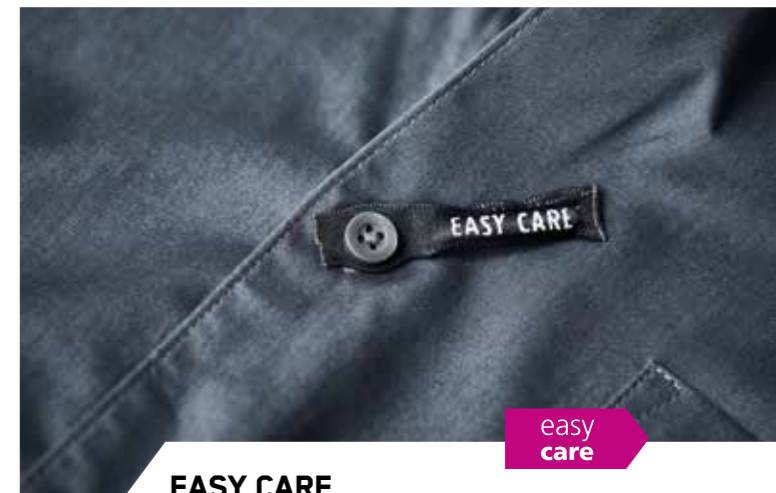
## 3M™ SCOTCHLITE™ REFLECTIVE FABRIC

The reflective fabric enhances the visibility at night or in poor lighting conditions. (without protective function/no PPE).



## SOFTSHELL

Softshell with TPU membrane consists of three layers. Due to the microporous TPU membrane as middle layer the material is water-proof, wind-proof and breathable at the same time.



## EASY CARE

This special finish makes shirts and blouses especially easy to iron. To preserve this function the textiles should not be overdried in the tumbler and you should avoid using an overheated iron.



## BIONIC-FINISH<sup>®</sup> ECO

BIONIC-FINISH<sup>®</sup> was developed, following the example set by nature, 'learning from nature'. The textile is protected against water and dirt by a very thin crystalline structure. BIONICFINISH<sup>®</sup>ECO protects man and nature.

# SIZES, QUALITY & CARE

MEN'S TROUSERS	XXS	XS	S	M	L	XL	XXL	3XL	4XL	5XL	6XL
Short Size					25	26	27	28			
Standard Size	42	44	46	48	50	52	54	56	58	60	62
Long Size				94	98	102	106	110			

LADIES' TROUSERS							
Size	34/36	38	40	42	44	46	48

MEN'S	XS	S	M	L	XL	XXL	3XL	4XL	5XL	6XL
Standard Size	44	46	48	50	52	54	56	58	60	62
Collar size in cm		36/38	39/40	41/42	43/44	45/46	47/48	49/50	51/52	53/54

LADIES'	XS	S	M	L	XL	XXL	3XL	4XL
Size	34	36/38	38/40	40/42	42/44	46	48	50



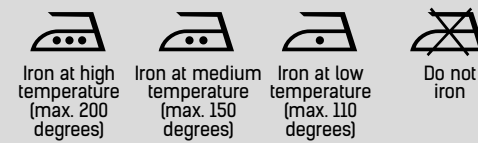
## WASHING (TUB)

The numbers in the tub indicate the maximum washing temperatures which must not be exceeded. The bar below the tub requires a more (mechanical) gentle treatment (e.g. programme for delicate fabrics). It designates washing programmes which are suitable for easy-care and delicate garments. Textiles made of cotton or mixed fibres should be pulled into shape when still wet. We recommend that textiles with prints or embroideries should only be washed on the reverse at a maximum of 40 degrees in order not to impair the quality of the print or embroidery.



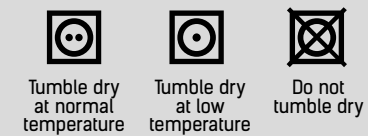
## IRONING (IRON)

The dots indicate the temperature scale of the irons. Textiles with prints or embroideries should only be ironed on the reverse.



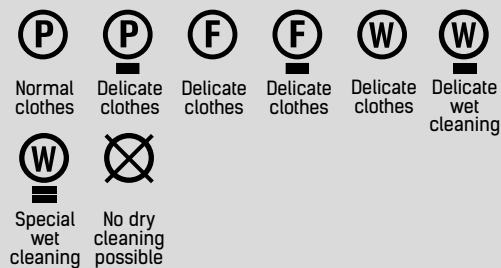
## TUMBLE DRYING (TUMBLE-DRIER)

The dots indicate the drying-grades of the tumble-drier. Textiles with transfer prints must not be tumble-dried.



## DRY CLEANING (CLEANING DRUM)

The letters are intended for the textile cleaner. They indicate the possible solvents. The bar below the circle requires cleaning under limited mechanical strain, with a limited amount of moisture and at a medium temperature. Textiles with prints or embroideries should not be dry cleaned.



## BLEACHING (TRIANGLE)

This symbol shows the textile cleaner whether the garment may be bleached or not.

